

- ### KEY
- SOURCE FOUR PAR
  - SOURCE FOUR 10'
  - SOURCE FOUR 14'
  - SOURCE FOUR AS NOTED
  - 6' FRESNEL 500w
  - ALTMAN 1KL ZOOM
  - ALTMAN SPECTRA CYC
  - COLORBLAZE 72
  - PAR 16 WFL - 75w
  - CHAUVET PAR
  - SHOWLINE SL-155
  - PRACTICAL
  - VARILITE VL1000 TSD
  - MARTIN MAC 2000 PROFILE
  - MARTIN MAC 700 PROFILE
  - MARTIN MAC 600 NT WASH
  - LED ZOOM AURA

- ### ACCESSORIES
- SOURCE FOUR COLOR EXTENDER
  - SOURCE FOUR STACKER HAT
  - CONCENTRIC RINGS
  - 4 PANEL BARN DOOR
  - CX SCROLLER
  - APOLLO SCROLLER
  - MXR SCROLLER
  - IRIS
  - DMX IRIS
  - ROTATOR
  - DUAL ROTATOR
  - TEMPLATE
  - I-PRO PROJECTOR
  - I-CUE MOVING MIRROR
  - RIGGING POINT
  - BARREL ALIGNMENT
  - FLOOR MOUNT PLATE

- ### NOTATION
- INST #   
 CHANNEL   
 COLOR   
 GOBO   
 DARK BASE = 750W   
 INVERSE/CHANNEL   
 RED = DMX BASE ADDR   
 GREEN = NON DIM PWR

NOTES:  
 A STAR (\*) AFTER NUMBER DENOTES ADDING R132 TO THE FRAME. A PLUS (+) DENOTES R119  
 CONFIRM BOOM/ADDED PIPES PLACEMENT BEFORE INSTALLATION WITH TECHNICAL DIRECTOR AND LIGHTING DESIGNER PRIOR TO INSTALLATION  
 PROVIDE SPARE BLACKWRAP, BLACKTAC, COLOR, L209, R132, R119, R104, AND R114 FOR POSSIBLE USE DURING FOCUS  
 ALL FOH ELLIPSOIDAL TO HAVE FULL FLOCKED TOPHATS

MARK	DATE	REVISIONS/ISSUES
1		
2		
3		
4		
5		
6		
7		

*Studio I theatre*

Director: Des Gallant  
 Costume Designer: Paula Calvo  
 Master Electrician: Jacob Owens  
 Technical Director: Rebecca Lucatero

## HEDDA GABLER

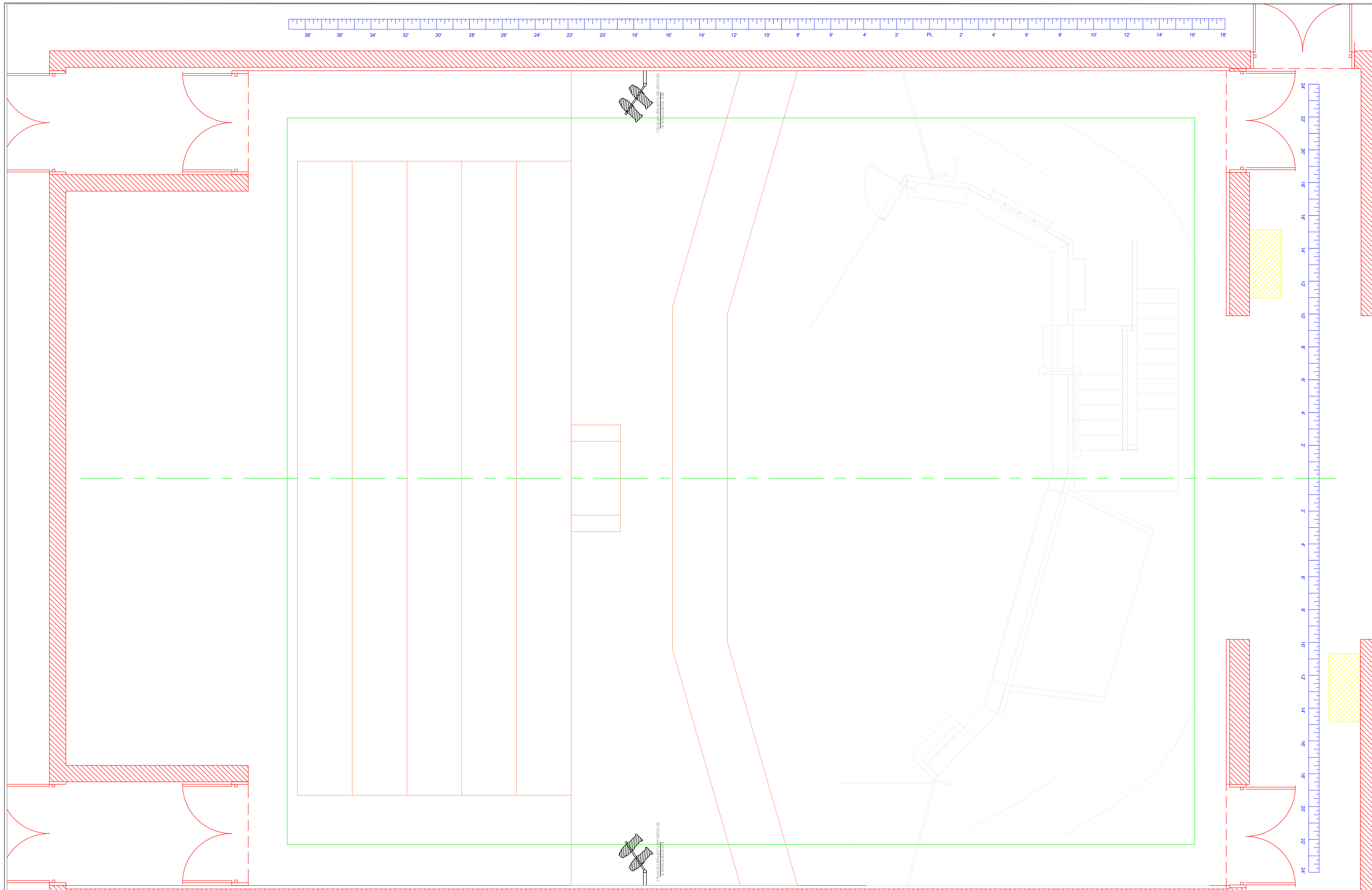
OVERSTAGE ELECTRICS  
 DESIGNER: THOMAS SHORROCK  
 OVERSTAGE ELECTRICS

SCALE:  
**3/8" = 1'-0"**

## PLATE NUMBER

# E-1





### KEY

- SOURCE FOUR PAR
- SOURCE FOUR 10'
- SOURCE FOUR 14'
- SOURCE FOUR AS NOTED
- 6' FRESNEL 500w
- ALTMAN 1KL ZOOM
- ALTMAN SPECTRA CYC
- COLORBLAZE 72
- PAR 16 WFL-75w
- CHAUVET PAR
- SHOWLINE SL 155
- PRACTICAL
- VARILITE VL1000 TSD
- MARTIN MAC 2000 PROFILE
- MARTIN MAC 700 PROFILE
- MARTIN MAC 600 NT WASH
- LED ZOOM AURA

### ACCESSORIES

- SOURCE FOUR COLOR EXTENDER
- SOURCE FOUR STACKER HAT
- CONCENTRIC RINGS
- 4 PANEL BARN DOOR
- CXI SCROLLER
- APOLLO SCROLLER
- MXR SCROLLER
- IRIS
- DMX IRIS
- ROTATOR
- DUAL ROTATOR
- TEMPLATE
- LPRD PROJECTOR
- 1 CUE MOVING MIRROR
- RIGGING POINT
- BARREL ALIGNMENT
- FLOOR MOUNT PLATE

### NOTATION

GOGO =  $\begin{matrix} E = 8350 \\ L = 15E \\ G = 20W \end{matrix}$   
 GOGO =  $\begin{matrix} E = 8350 \\ L = 15E \\ G = 20W \end{matrix}$   
 GOGO =  $\begin{matrix} E = 8350 \\ L = 15E \\ G = 20W \end{matrix}$   
 INST # 21  
 CHANNEL 150  
 DARK BASE = 750W  
 UNIVERSE/CHANNEL  
 RED = DMX BASE ADDR  
 GREEN = NON DIM PWR

NOTES:  
 A STAR (\*) AFTER NUMBER DENOTES ADDING R132 TO THE FRAME. A PLUS (+) DENOTES R119  
 CONFIRM BOOM/ADDED PIPES PLACEMENT BEFORE INSTALLATION WITH TECHNICAL DIRECTOR AND LIGHTING DESIGNER PRIOR TO INSTALLATION  
 PROVIDE SPARE BLACKWRAP, BLACKTAC, COLOR, L209, R132, R119, R104, AND R114 FOR POSSIBLE USE DURING FOCUS  
 ALL FOH ELLIPSOIDAL TO HAVE FULL FLOCKED TOPHATS

**Lighting Design Copyright © 2019 by Thomas Shorrock Lighting Design.**  
 The designs and ideas expressed in this drawing and the related paperwork are the property of the lighting designer and may not be reproduced in any form without the advance written permission of the lighting designer. Use of this design is limited to a one time use by the producing company named in the title block of this drawing.  
 All work done in the process of executing this design shall comply with all applicable city, state, and federal fire and safety codes. The lighting designer assumes no responsibility or liability for any accident or injuries incurred by anyone during the load-in, set-up, focusing, cueing, rehearsal, performance or load-out of this production. The designer is unqualified to determine the structural appropriateness of this design and will not assume responsibility for improper engineering or use.  
 The Company agrees to indemnify, defend, save and hold harmless the Designer, Designer's heirs, executors, administrators and assigns from and against any and all liabilities, damages, costs, expenses, and/or other losses (including reasonable attorney's fees) arising out of Designer's performance under this Agreement.

MARK	DATE	REVISIONS/ISSUES
1		
2		
3		
4		
5		
6		
7		

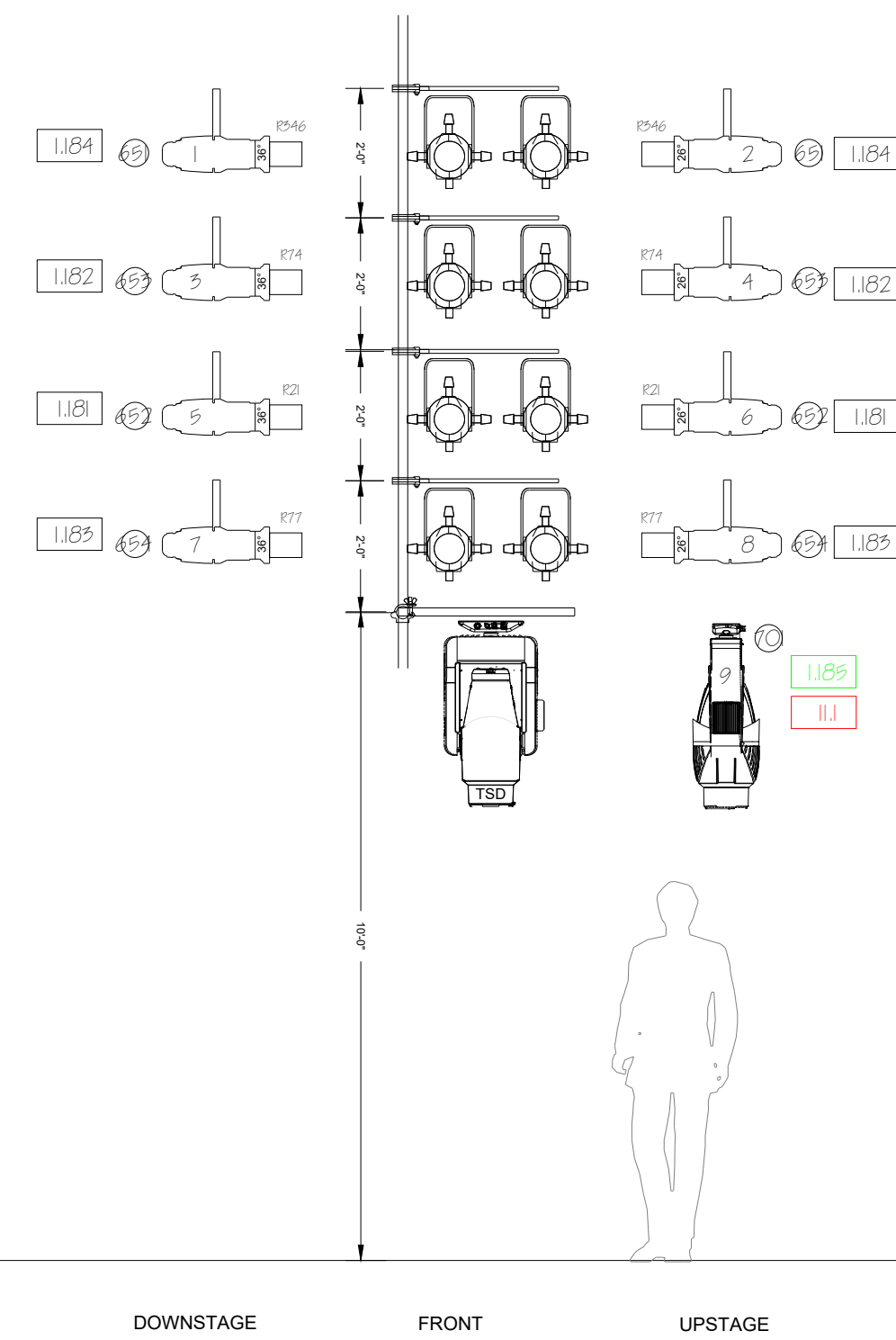


*Studio I theatre*  
 Director: Des Gallant  
 Costume Designer: Paula Calvo  
 Master Electrician: Jacob Owens  
 Technical Director: Rebecca Lucatero  
 777 Glades Road, Boca Raton, FL 33431 561-297-3810

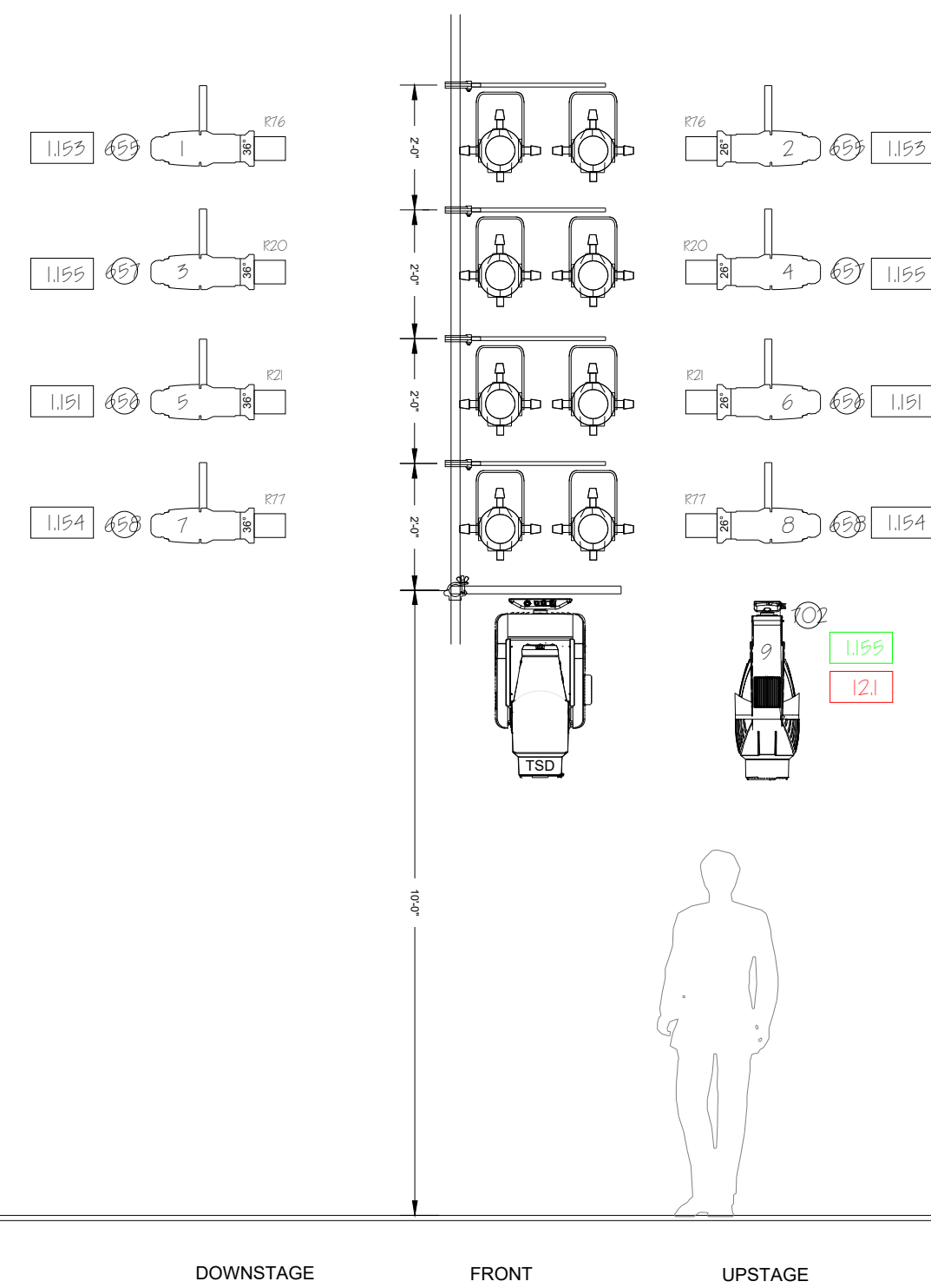
**HEDDA GABBLER**

STAGE FLOOR PLAN  
 DESIGNER: THOMAS M. SHORROCK  
 PRELIMINARY LIGHT PLOT  
 THOMAS SHORROCK DESIGNS  
 CELL: 561-452-0507  
 EMAIL: SHORROCKT@OUTLOOK.COM

PLATE NUMBER  
**E-2**  
 SCALE:  
**3/8" = 1'-0"**

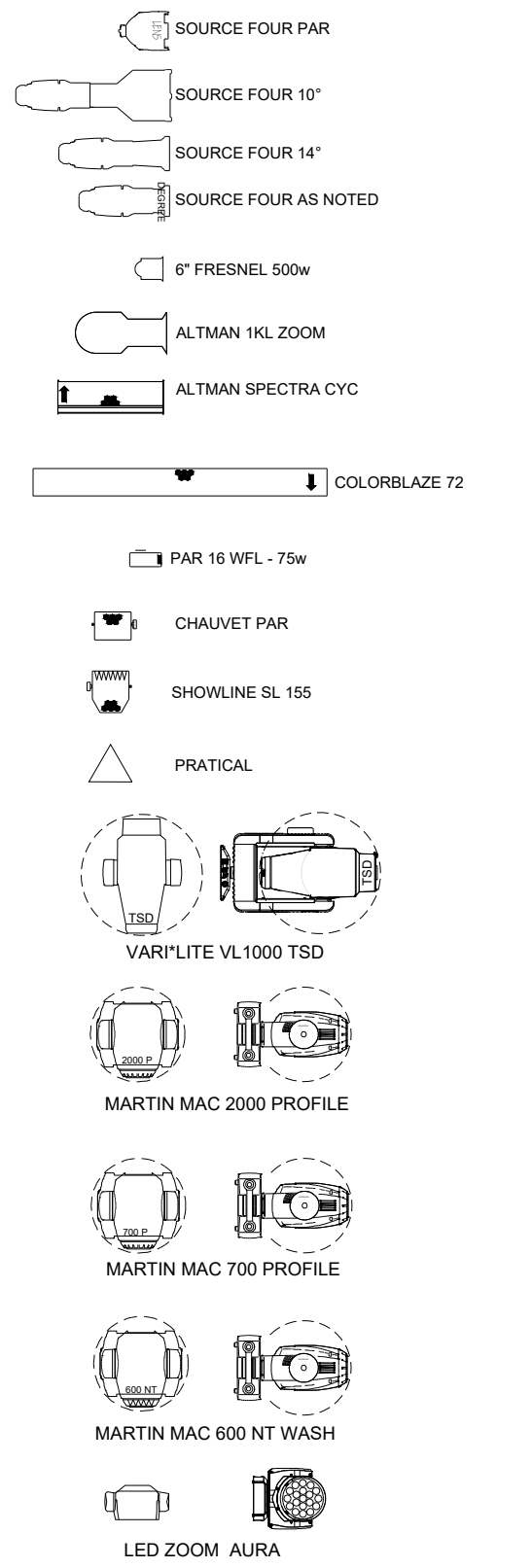


- WEST BOOM #1**
- UNITS ARE MOUNTED TO 24" SAFER SIDEARMS
  - ATTACH TO WALL WITH KEE CLAMP BOOM
  - SEE PAPERWORK FOR TWOFER ARRANGEMENT

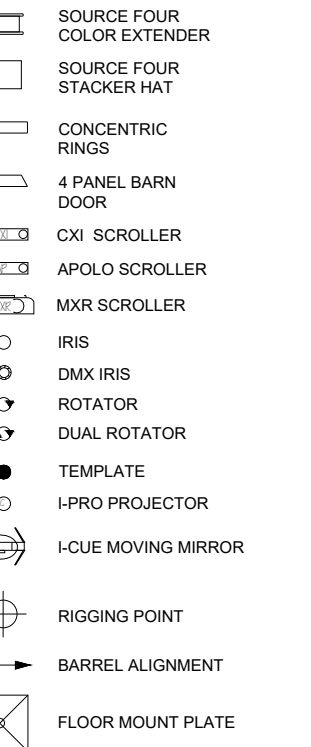


- EAST BOOM #1**
- UNITS ARE MOUNTED TO 24" SAFER SIDEARMS
  - ATTACH TO WALL WITH KEE CLAMP BOOM
  - SEE PAPERWORK FOR TWOFER ARRANGEMENT

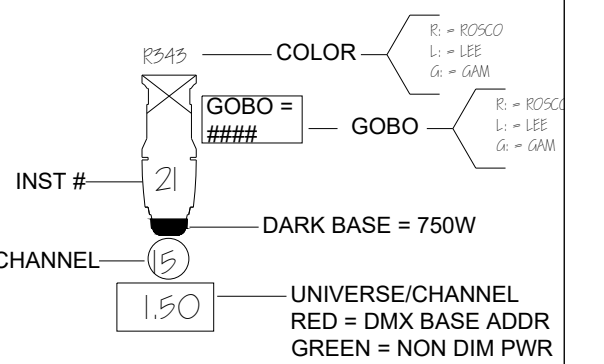
**KEY**



**ACCESSORIES**



**NOTATION**



NOTES:  
 A STAR (\*) AFTER NUMBER DENOTES ADDING R132 TO THE FRAME. A PLUS (+) DENOTES R119  
 CONFIRM BOOM/ADDED PIPES PLACEMENT BEFORE INSTALLATION WITH TECHNICAL DIRECTOR AND LIGHTING DESIGNER PRIOR TO INSTALLATION  
 PROVIDE SPARE BLACKWRAP, BLACKTAC, COLOR, L209, R132, R119, R104, AND R114 FOR POSSIBLE USE DURING FOCUS  
 ALL FOH ELLIPSOIDAL TO HAVE FULL FLOCKED TOPHATS

MARK	DATE	REVISIONS/ISSUES
1		
2		
3		
4		
5		
6		
7		



*Studio 1 theatre*

Director: Des Gallant  
 Costume Designer: Paula Calvo  
 Master Electrician: Jacob Owens  
 Technical Director: Rebecca Lucatero

777 Glades Road, Boca Raton, FL 33431 561-297-3810

**HEDDA GABBLER**

BOOMS

DESIGNER: THOMAS M. SHORROCK

PRELIMINARY LIGHT PLOT

PLATE NUMBER

**E-3**

SCALE:

**3/8" = 1'-0"**