

PLATE SCHEDULE

- F-1 FALSE PRO
- F-2 SHOW PORTAL
- F-3 MIDSTAGE LEGS
- F-4 UPSTAGE LEGS
- F-5 SR FAN
- F-6 SL FAN
- F-7 CARPENTRY DETAILS
- R-1 GRID RIGGING STEEL PLAN

NOTES FOR ALL PLATES AND CONSTRUCTION:

1. UNLESS OTHERWISE SPECIFIED, GLUE MUST BE USED ON ALL JOINTS AND CONNECTIONS
2. UNLESS OTHERWISE SPECIFIED, CARPENTER MAY CHOOSE FASTENER TYPES.
3. STEP FACINGS SHALL BE INSTALLED AFTER CARRIAGE AND PLATS ARE IN PLACE.

NOTES FOR ALL PLATFORM CONSTRUCTION:

1. GLUE MUST BE USED ON ALL JOINTS AND CONNECTIONS IN PLATFORM CONSTRUCTION
2. UNLESS OTHERWISE SPECIFIED, CARPENTER MAY CHOOSE FASTENER TYPES.
3. BANDING SHOULD BE AT LEAST 1-1/2" WIDTH MINIMUM, SPACE 2" FROM FLOOR.
4. ALL LEGS OF 2'-6" HEIGHT (50") MUST BE BOLTED USING A MINIMUM OF 3/8" BOLTS.
5. WHEN PLATFORMS ARE JOINED AND LEGS ARE BOLTED, USE OF FLATHEAD BOLTS ARE REQUIRED.
6. ALL BOLTS CONNECTING PLATFORMS SHALL BE AT LEAST 3/8", GRADE 2 BOLTS, WITH WASHERS ON EACH SIDE OF CONNECTION.
7. ALL FACINGS MUST BE ATTACHED WITH A MINIMUM OF 1 1/4" #2 DRYWALL SCREWS SPACED ON 8" CENTERS. DO NOT GLUE FACINGS. DO NOT USE STAPLES TO ATTACH FACINGS.
8. ALL JOINTS IN FACINGS MUST BE FILLED VIA BONDO OR OTHER TD APPROVED FILLER.
9. ALL JOINTS ON FACINGS MUST BE MITERED.
10. ALL ACTING ESCAPE LEVELS ABOVE 1'-6" (18") MUST HAVE GARD RAILS
11. ALL ONSTAGE PLATFORM LEVELS MUST HAVE A TOE STRIP (3/4" X 3/4") INSTALLED ON THE EDGES.
12. ALL PLATFORM SURFACES MUST HAVE HOLES FILLED, AND NO FASTENERS PROTRUDING ABOVE LEVEL
13. CUT ALL LIDS AND THEN FRAME MATERIALS TO LID. (EXCLUDES ANY STEEL WORK)

NOTES FOR ALL PLAT CONSTRUCTION:

1. GLUE MUST BE USED ON ALL CONNECTIONS IN PLATS, REGARDLESS OF ORIENTATION.
2. ALL PLATS MUST BE ASSEMBLED USING STAPLES. USE OF SCREWS IS NOT ALLOWED.
3. ORIENTATION OF GRAIN ON ALL CORNERBLOCKS AND KEYSONES IS ESSENTIAL.
4. HARD COVER ALL PLATS. NOTE BENE MATCH LINES FOR LAJAN
5. ANY DOUBLE SIDED PLAT SHOULD BE CORRELATED FASTENED AT ALL FRAME POINTS
6. DOOR OPENINGS RECEIVE STANDARD 1-1/2" SLAM STRIP. HARDWARE NEEDS TO BE PRACTICAL.
7. SEE DESIGNER DRAWINGS FOR DETAILS ON DOOR OPENINGS WITHOUT DOORS
8. ALL SEAMS ON WALLS MUST BE BONDO FILLED, OR FILLED WITH A TD APPROVED ALTERNATE
9. UNLESS OTHERWISE INDICATED, ALL ELEVATIONS ARE FRONT ELEVATIONS OF THE PLATS

These drawings are instruments of service and as such remain the property of the creator. No copies or reproductions are permitted without the consent of the creator. Copyright (C) 2019

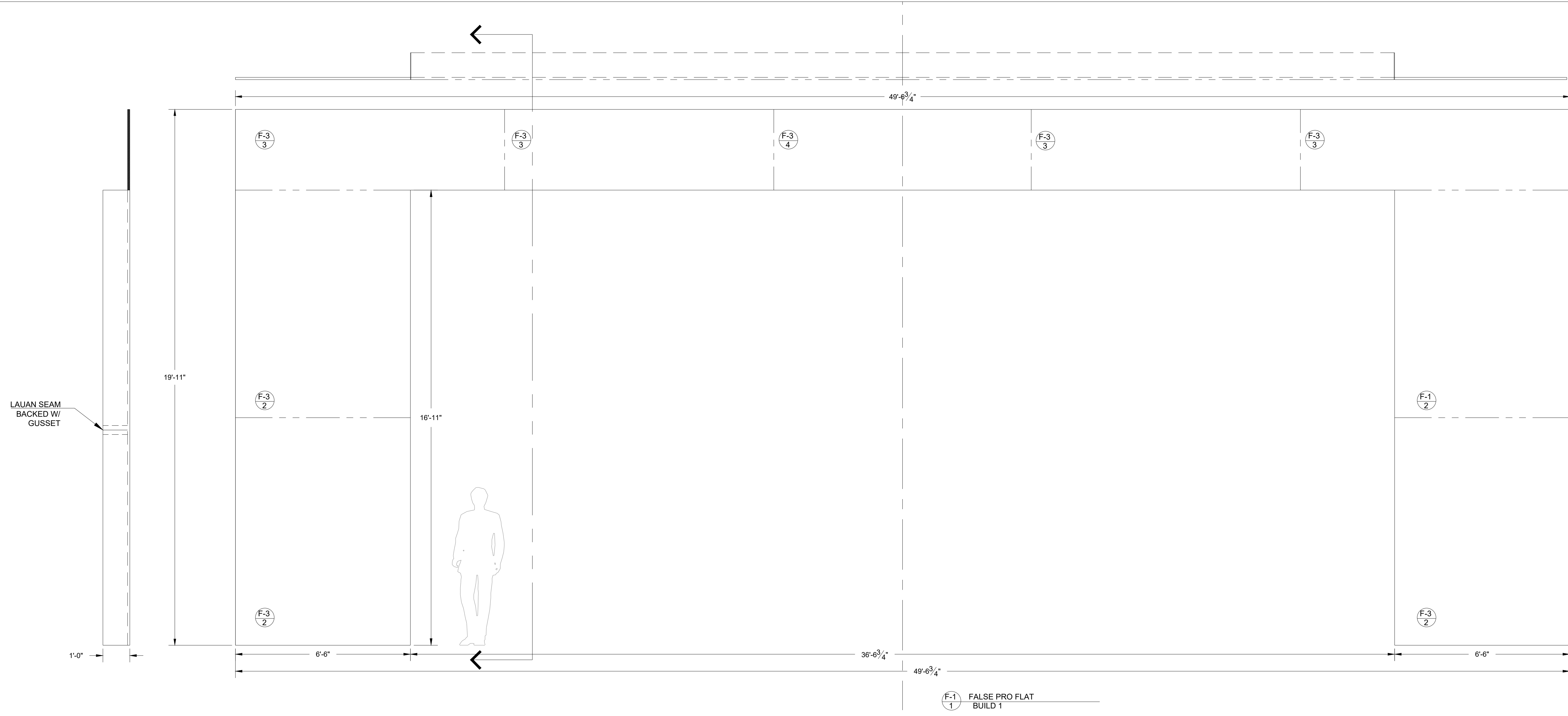
FLORIDA ATLANTIC UNIVERSITY
 777 GLADES ROAD
 BOCA RATON, FL 33431
 PHONE: (561)297-3810, TD: (561)715-9898
 FAX: (561)297-0611

MARK	DATE	REVISIONS/ISSUES
1		
2		
3		
4		
5		
6		
7		

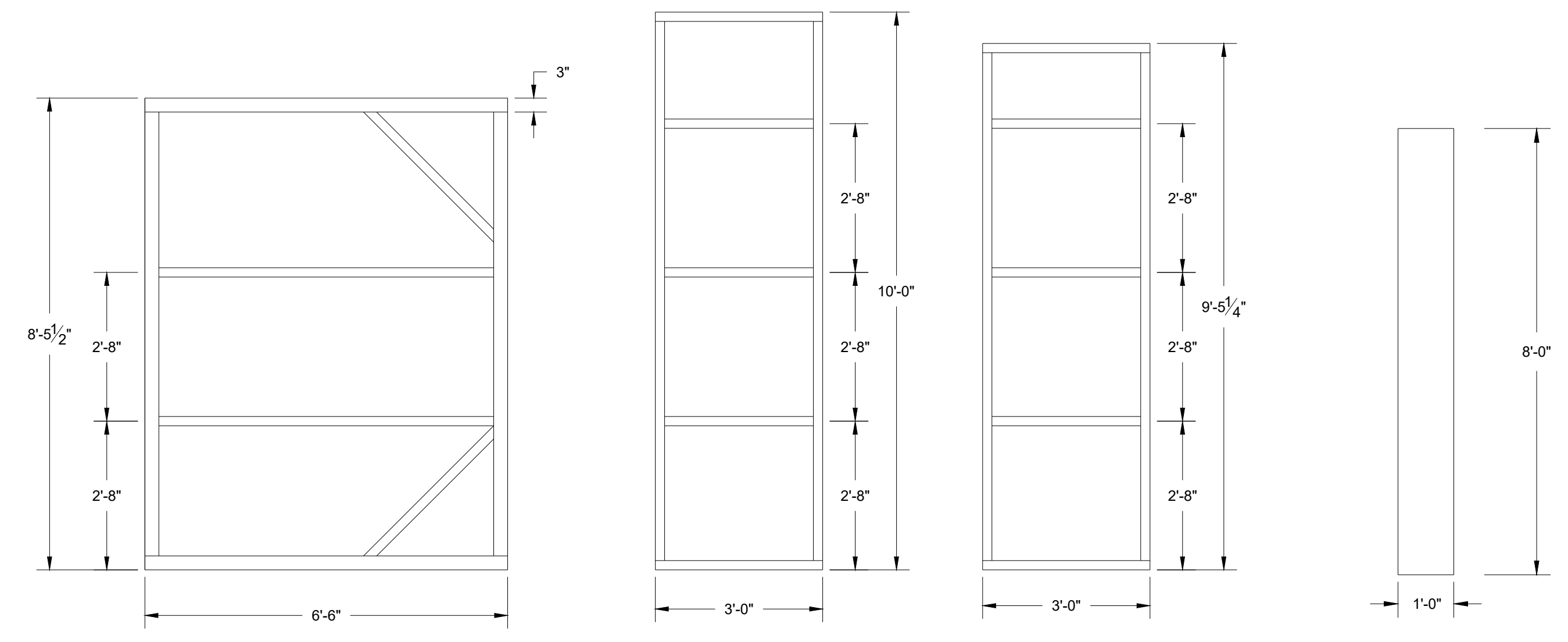
LADY WINDMERES FAN
 THEATRE: STUDIO ONE THEATRE @ FAU
 DESIGNER: J. SHAVER
 DIRECTOR: K. JOHNSTON
 ISSUE DATE: 1-1-22
 AY SPRING 2022

PLATE NUMBER
CVR

SCALE:
1/2" = 1'-0"



F-1
1 FALSE PRO FLAT
BUILD 1



F-1
2 FALSE PRO FLAT LEG
BUILD 4

F-1
3 FALSE PRO FLAT HEADER
BUILD 4

F-1
4 FALSE PRO FLAT HEADER
BUILD 1

F-1
8 LAUAN RETURN FOR FALSE PRO
CUT 9 TRIM AS NECESSARY

These drawings are instruments of service and as such remain the property of the creator. No copies or reproductions are permitted without the consent of the creator. Copyright (C) 2022

FLORIDA ATLANTIC UNIVERSITY

777 GLADES ROAD
BOCA RATON, FL 33431
PHONE: (561) 297-3810, TD: (561) 715-9898
FAX: (561) 297-0611

MARK	DATE	REVISIONS/ISSUES
1		
2		
3		
4		
5		
6		
7		

LADY WINDMERES FAN

THEATRE: STUDIO ONE THEATRE @ FAU
DESIGNER: J. SHAVER
DIRECTOR: K. JOHNSTON
ISSUE DATE: 1-1-22
AY SPRING 2022

PLATE NUMBER
F1

SCALE:
1/2" = 1'-0"

These drawings are instruments of service and as such remain the property of the creator. No copies or reproductions are permitted without the consent of the creator. Copyright (C) 2022

FLORIDA ATLANTIC UNIVERSITY

777 GLADES ROAD
BOCA RATON, FL 33431
PHONE: (561) 297-3810, TD: (561) 715-9898
FAX: (561) 297-0611

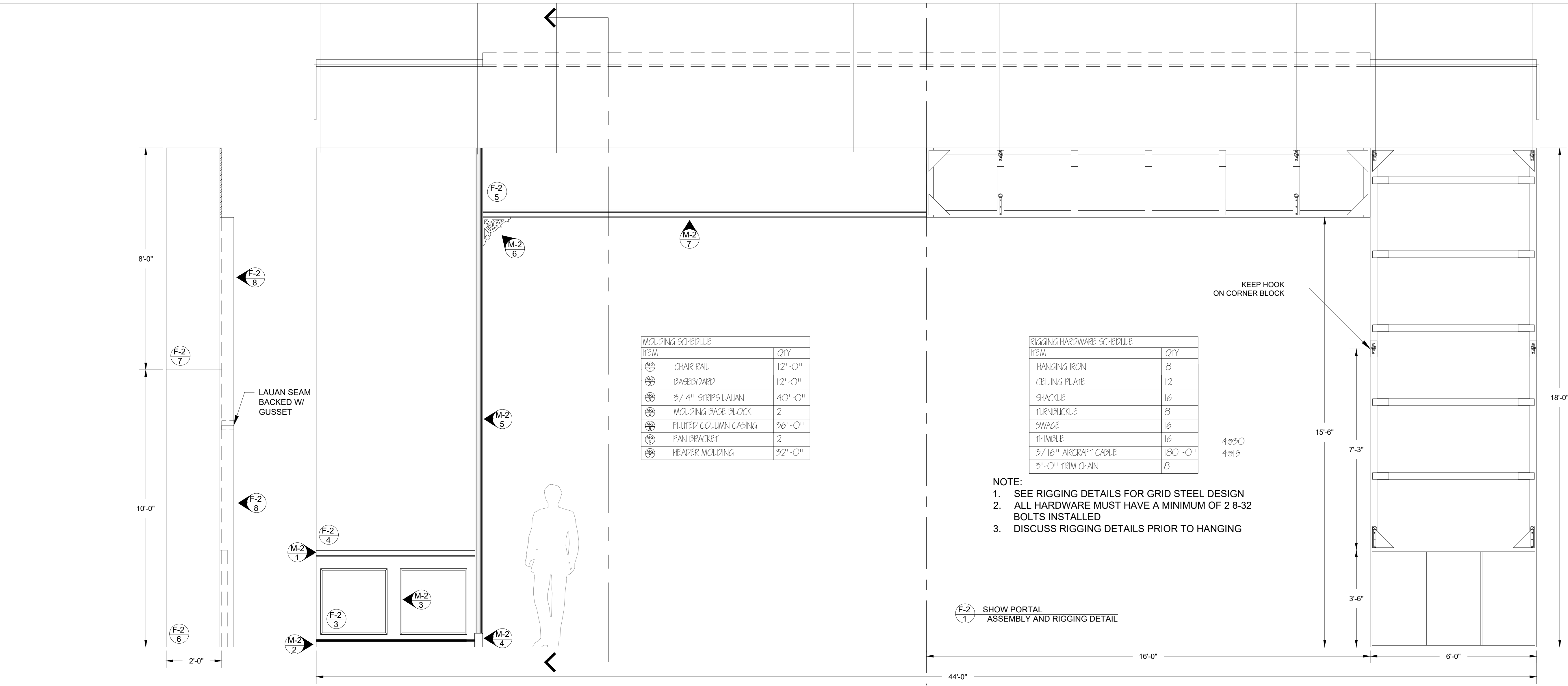
MARK	DATE	REVISIONS/ISSUES
1		
2		
3		
4		
5		
6		
7		

LADY WINDMERES FAN

THEATRE: STUDIO ONE THEATRE @ FAU
DESIGNER: J. SHAVER
DIRECTOR: K. JOHNSTON
ISSUE DATE: 1-1-22
AY SPRING 2022

SCALE: **1/2" = 1'-0"**

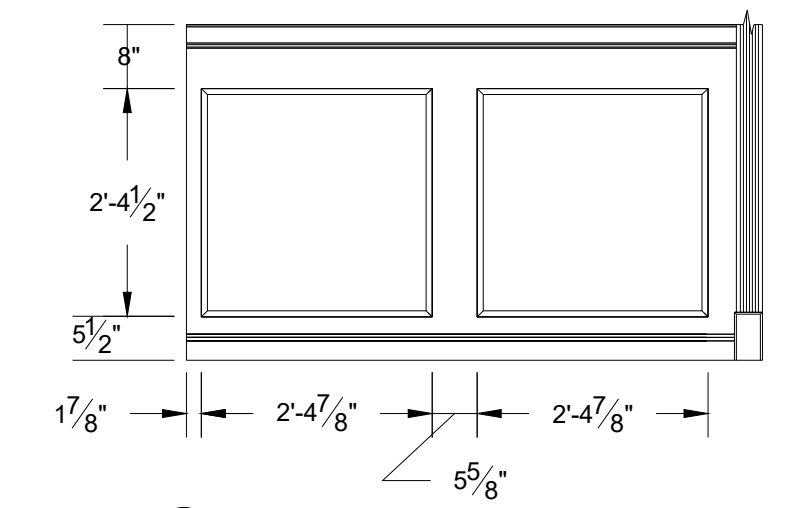
PLATE NUMBER
F2



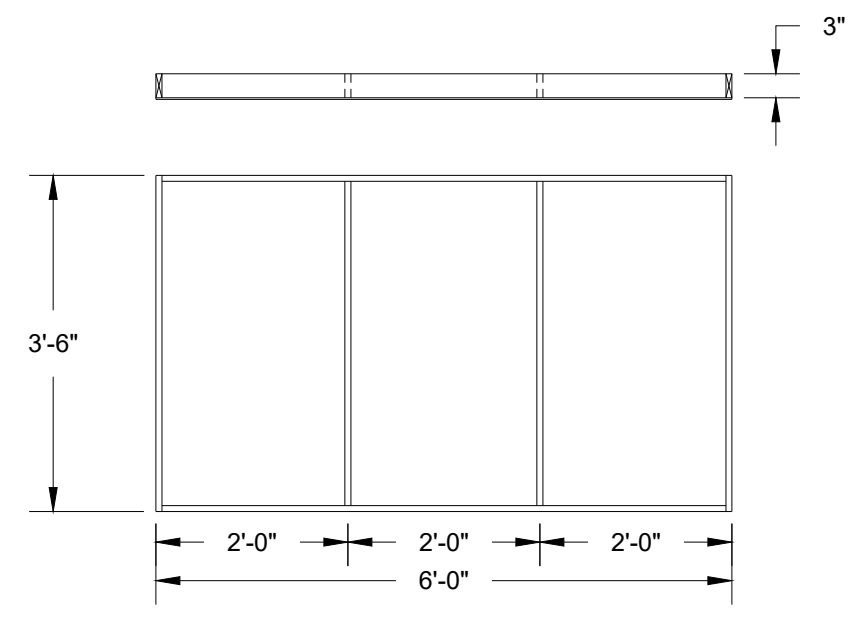
- NOTE:**
- SEE RIGGING DETAILS FOR GRID STEEL DESIGN
 - ALL HARDWARE MUST HAVE A MINIMUM OF 2 8-32 BOLTS INSTALLED
 - DISCUSS RIGGING DETAILS PRIOR TO HANGING

F-2 1 SHOW PORTAL ASSEMBLY AND RIGGING DETAIL

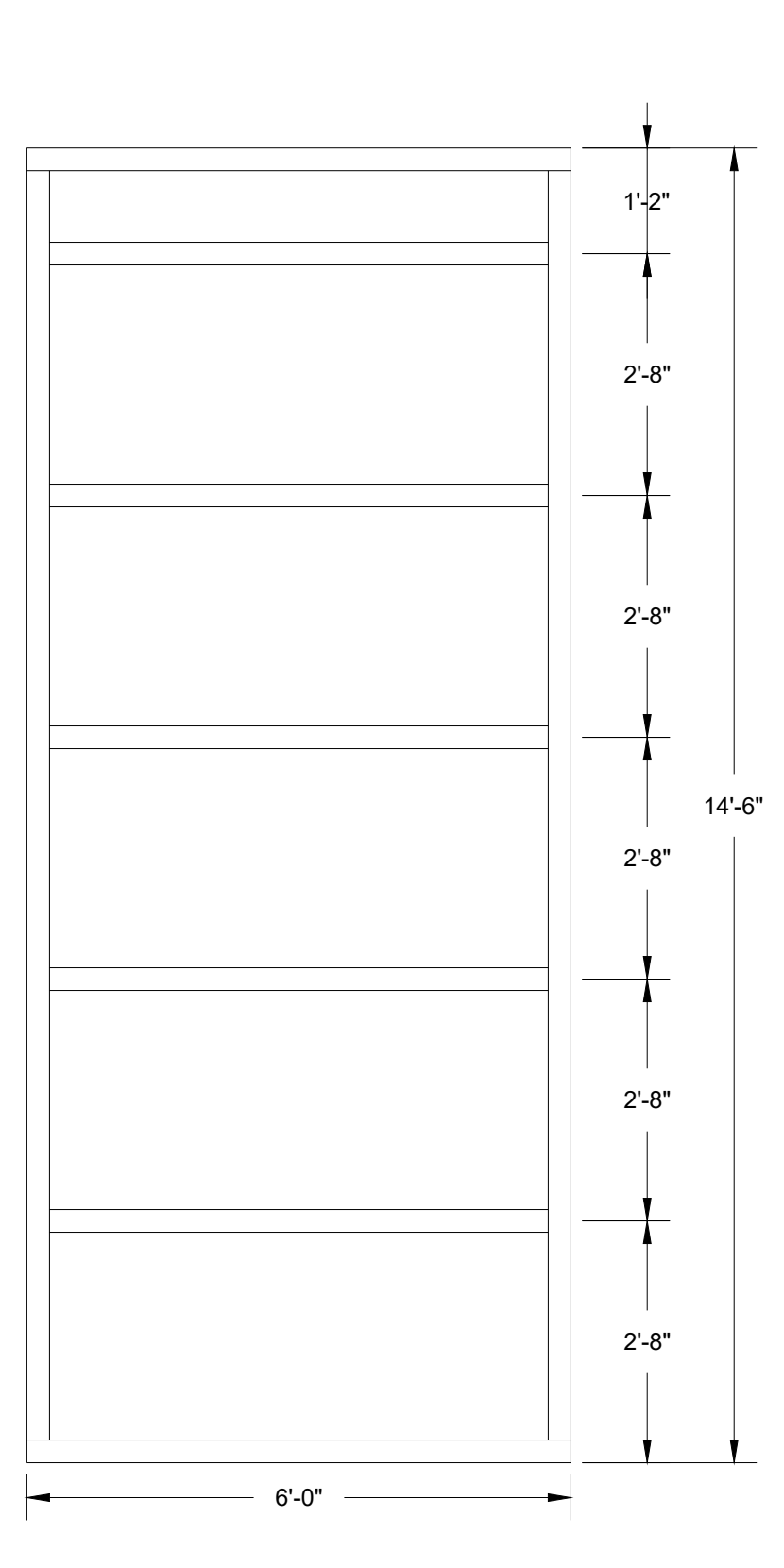
- NOTE:**
- ATTACH BOX MOLDINGS FLAT ON TABLE
 - USE GLUE AND STAPLES
 - BACK GRIND STAPLES TO REMOVE LEGS PROTRUDING
 - FILL ALL STAPLE HOLES



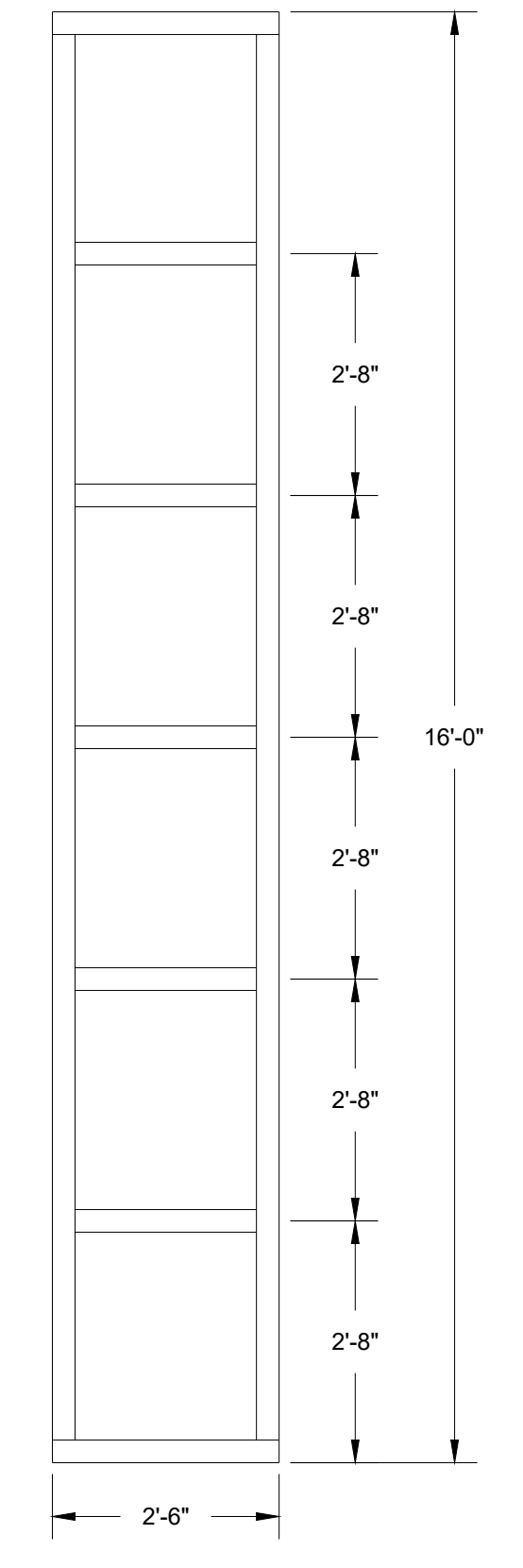
F-2 2 SHOW PORTAL MOLDING DETAIL SR SHOWN R&R FOR SL



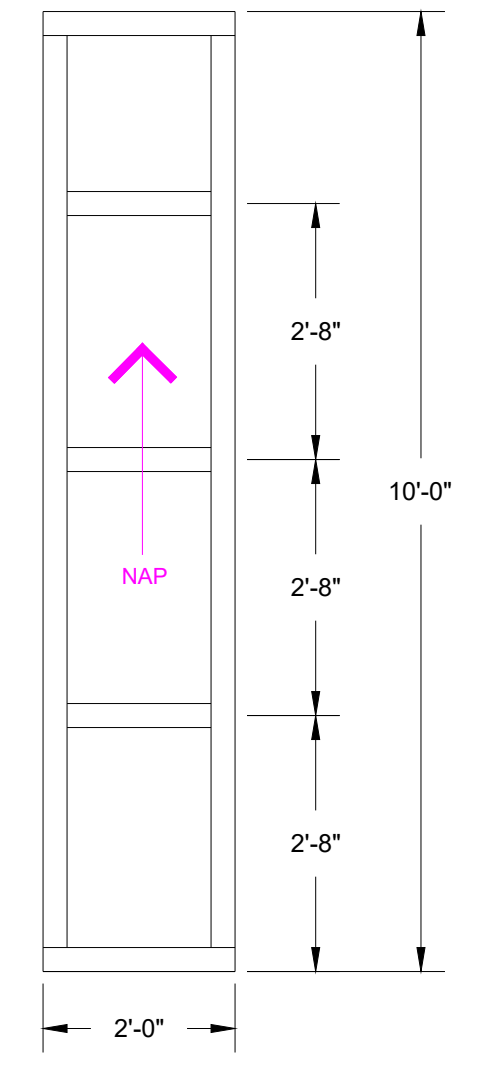
F-2 3 SHOW PORTAL LEG BUILD 2-HOLLYWOOD STYLE



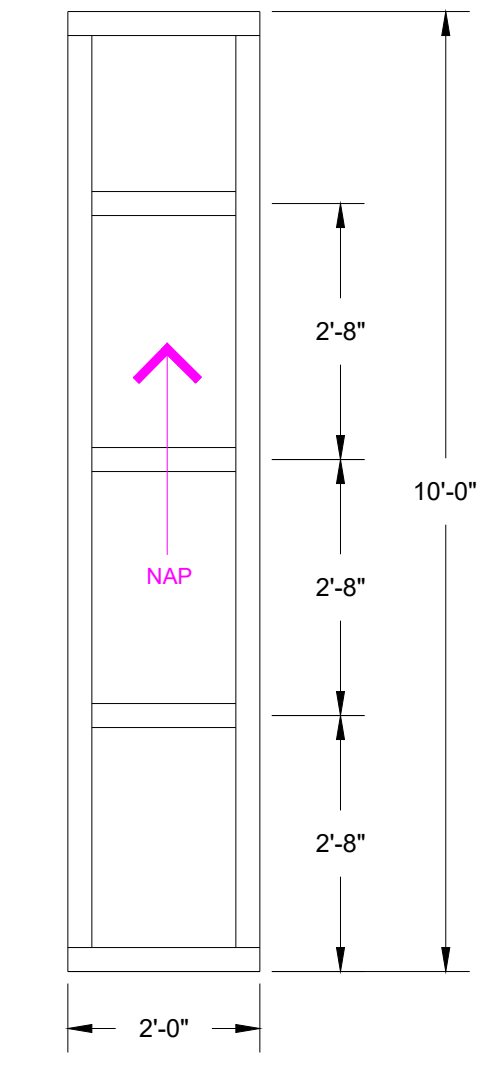
F-2 4 SHOW PORTAL LEG BUILD 2-STAGE FLAT MUSLIN CVR



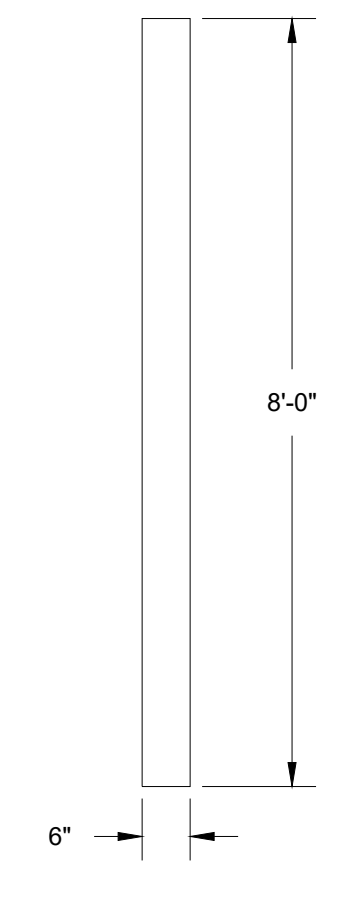
F-2 5 SHOW PORTAL BORDER BUILD 2-STAGE FLAT MUSLIN CVR



F-2 6 SHOW PORTAL MASKING BUILD 2-STAGE FLAT (DUVE CVR)

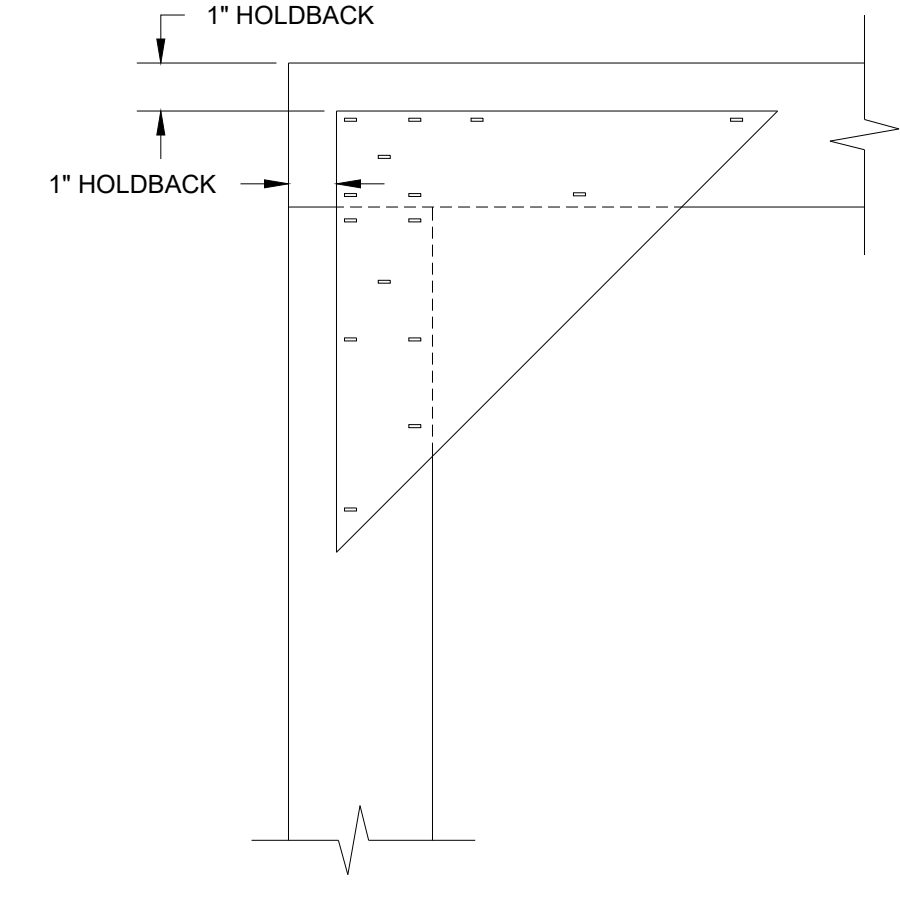


F-2 7 SHOW PORTAL MASKING BUILD 2-STAGE FLAT (DUVE CVR)

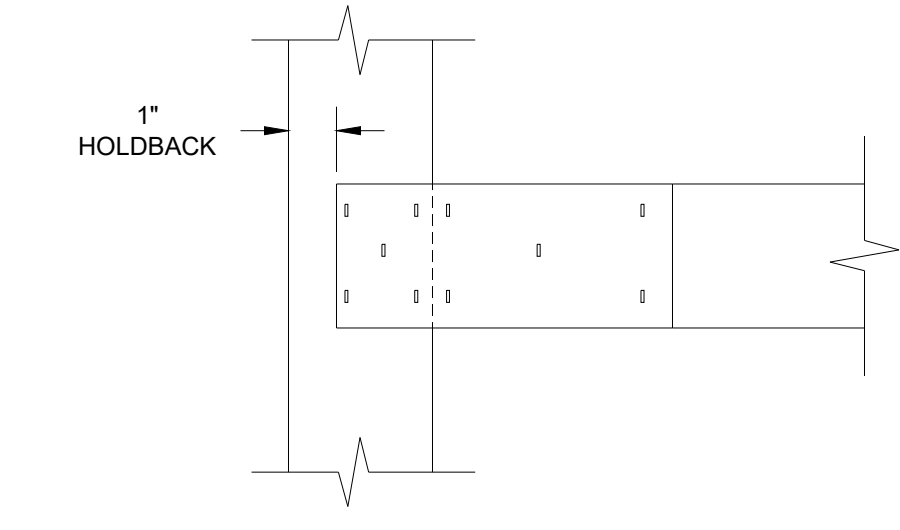


F-2 8 LAUAN RETURN FOR PORTAL CUT & TRIM AS NECESSARY

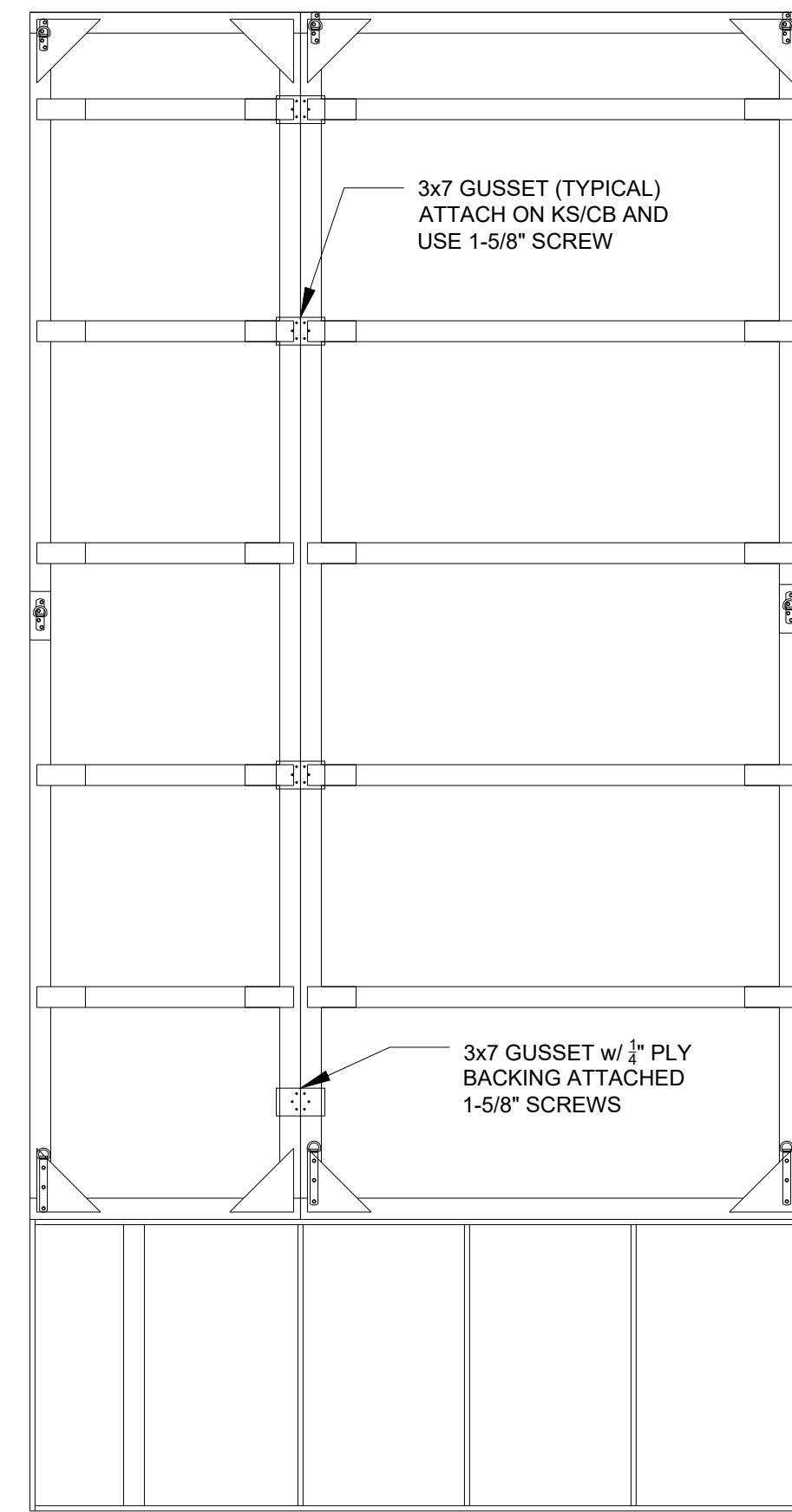
- NOTES:**
- USE 1x3 TRUE FRAMING FOR ALL MEMBERS
 - USE 1/2" PLY CORNER BLOCKS AND KEYSTONES
 - MUSLIN COVERED. USE 84" MUSLIN FOR 6'-0" WIDE FLATS AND 48" MUSLIN FOR 2'-6" FLATS
 - DUVE COVERED FLATS ARE SPLIT ON CL OF DUVE. CHALK BACK FOR NAP DIRECTION
 - BACK STAPLE MUSLIN
 - REVEAL SHOULD BE BLOCKED AT ALL JOINTS ONCE ATTACHED TO KEEP JOINTS SEAMLESS
 - RIGGING HARDWARE ADDED PRIOR TO COVERING WITH MUSLIN
 - BACK PAINT MUSLIN FLATS TO STOP LIGHT LEAKS
 - CORRUGATED FASTENER ALL STAGE FLAT JOINTS



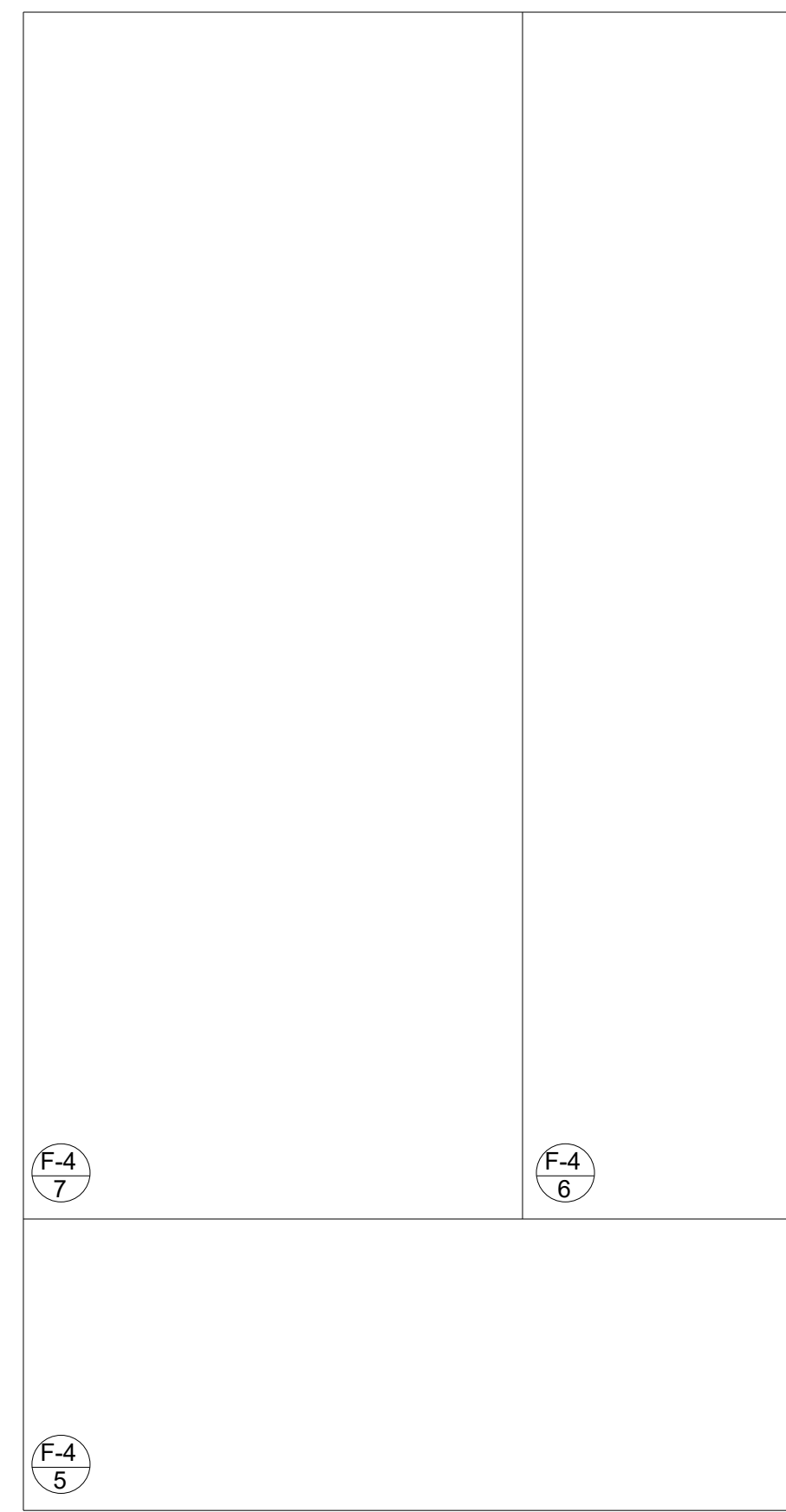
F-2 9 CORNERBLOCK ATTACHMENT DETAIL SCALE 3" = 1'-0"



F-2 10 STRAP ATTACHMENT DETAIL SCALE 3" = 1'-0"



F-4 1 US PORTAL LEG RIG AND ASSEMBLY DETAIL

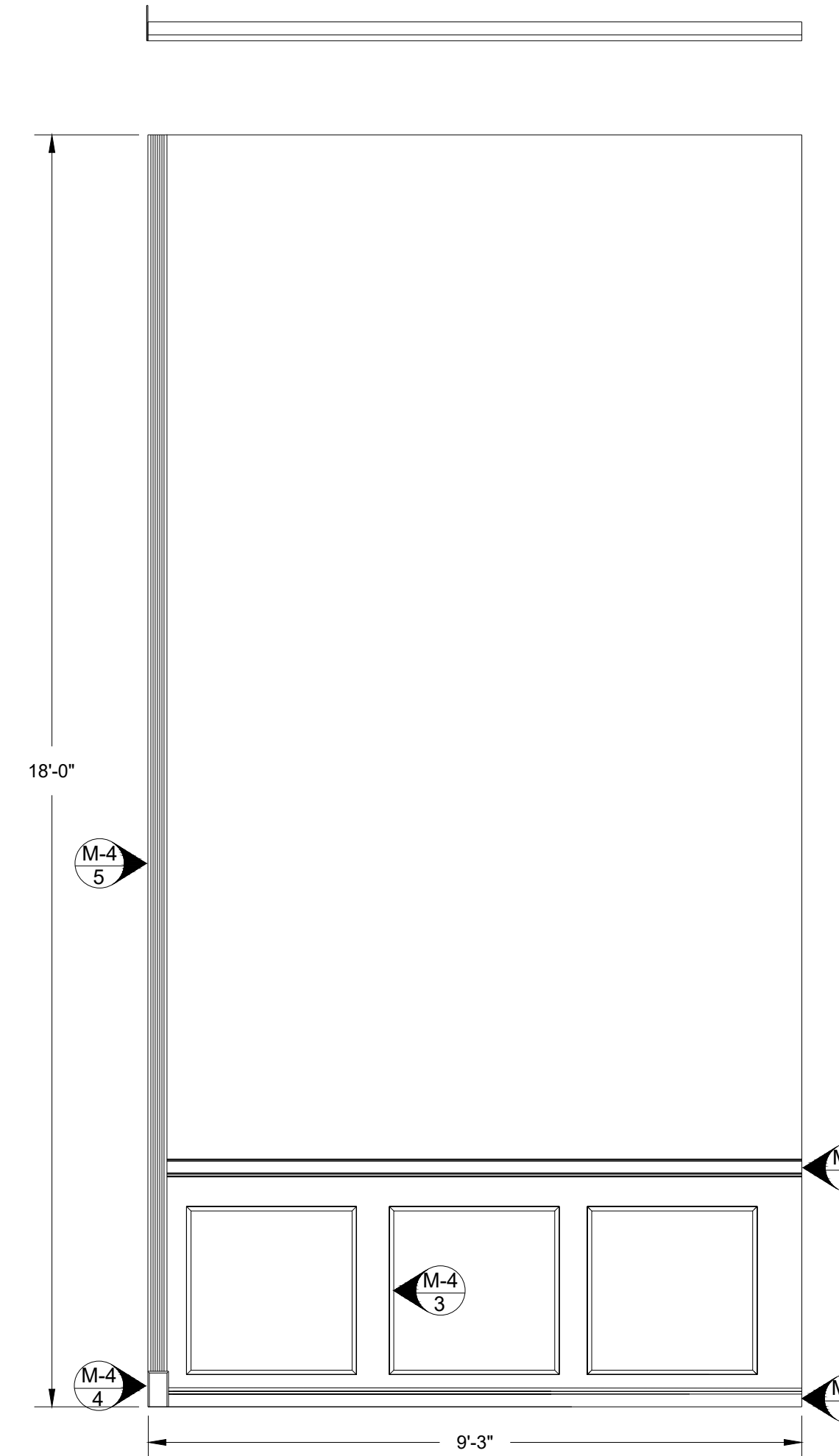


F-4 2 US PORTAL LEG FLAT ASSEMBLY DETAIL

MOLDING SCHEDULE	
ITEM	QTY
CHAIR RAIL	8'-0"
BASEBOARD	8'-0"
3/4" STRIPS LAUAN	30'-0"
MOLDING BASE BLOCK	1
FLUTED COLUMN CASING	18'-0"

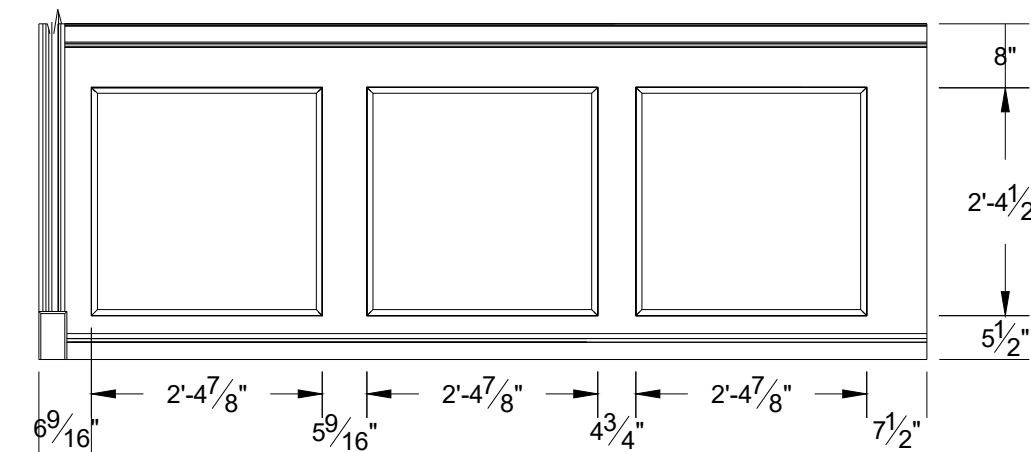
RIGGING HARDWARE SCHEDULE	
ITEM	QTY
HANGING IRON	3
CEILING PLATE	6
SHACKLE	6
TURNBUCKLE	3
SWAGE	6
THIMBLE	6
3/16" AIRCRAFT CABLE	90'-0"
3'-0" TRIM CHAIN	3

- NOTE:
- SEE RIGGING DETAILS FOR GRID STEEL DESIGN
 - ALL HARDWARE MUST HAVE A MINIMUM OF 2 8-32 BOLTS INSTALLED
 - DISCUSS RIGGING DETAILS PRIOR TO HANGING

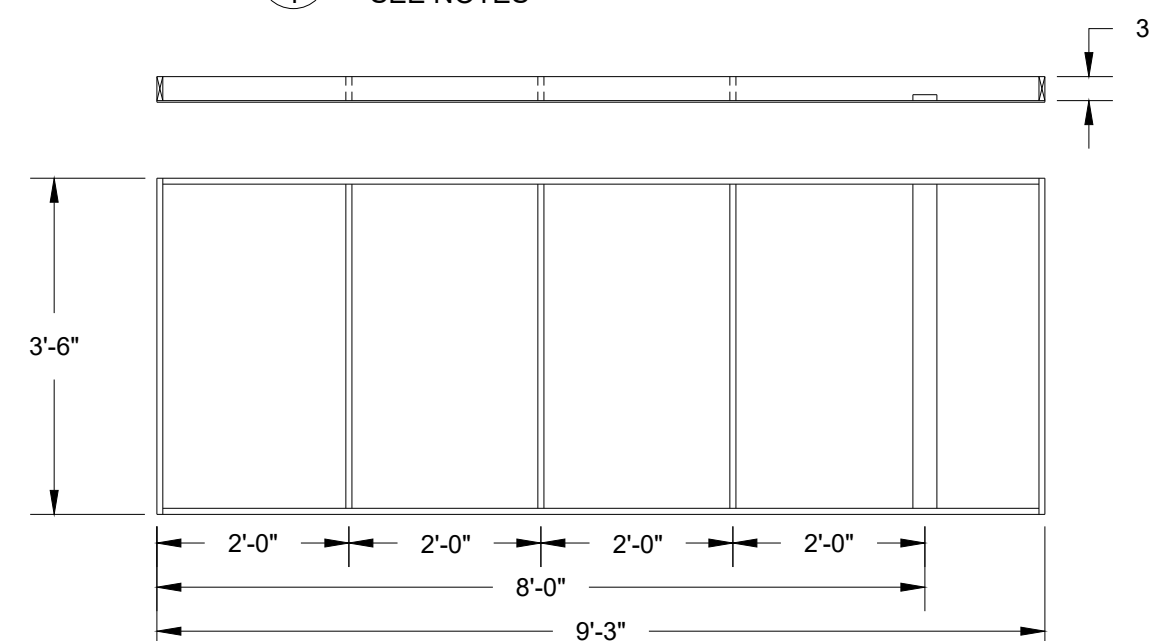


F-4 3 US PORTAL LEG FINAL ASSEMBLY DETAIL

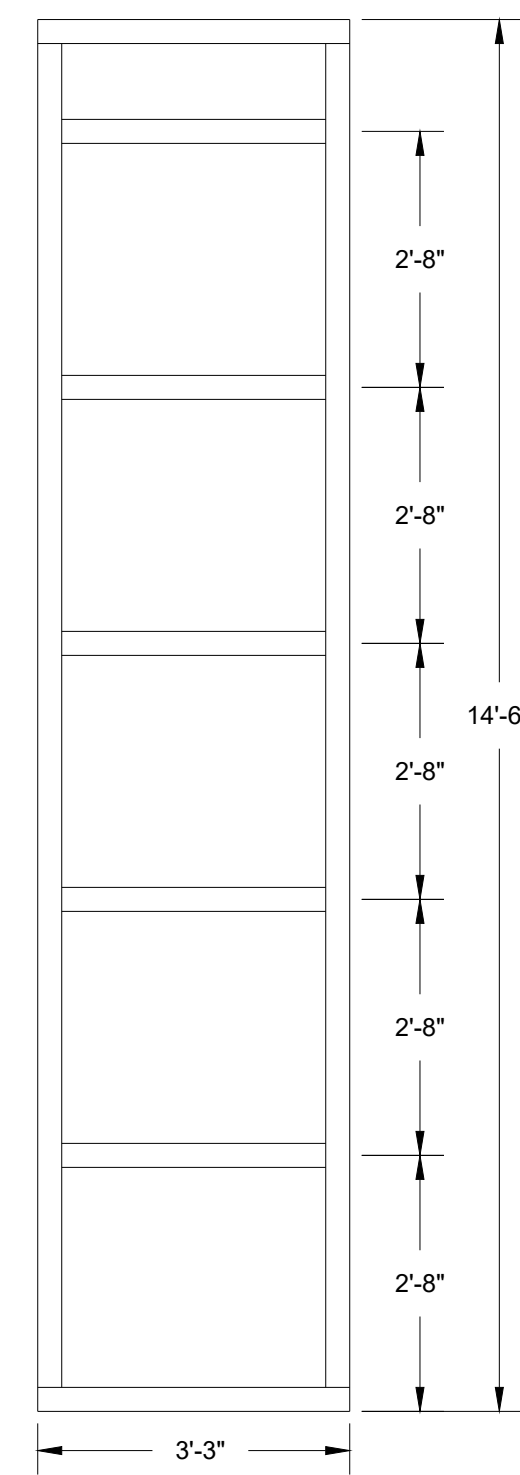
- NOTE:
- ATTACH BOX MOLDINGS FLAT ON TABLE
 - USE GLUE AND STAPLES
 - BACK GRIND STAPLES TO REMOVE LEGS PROTRUDING
 - FILL ALL STAPLE HOLES



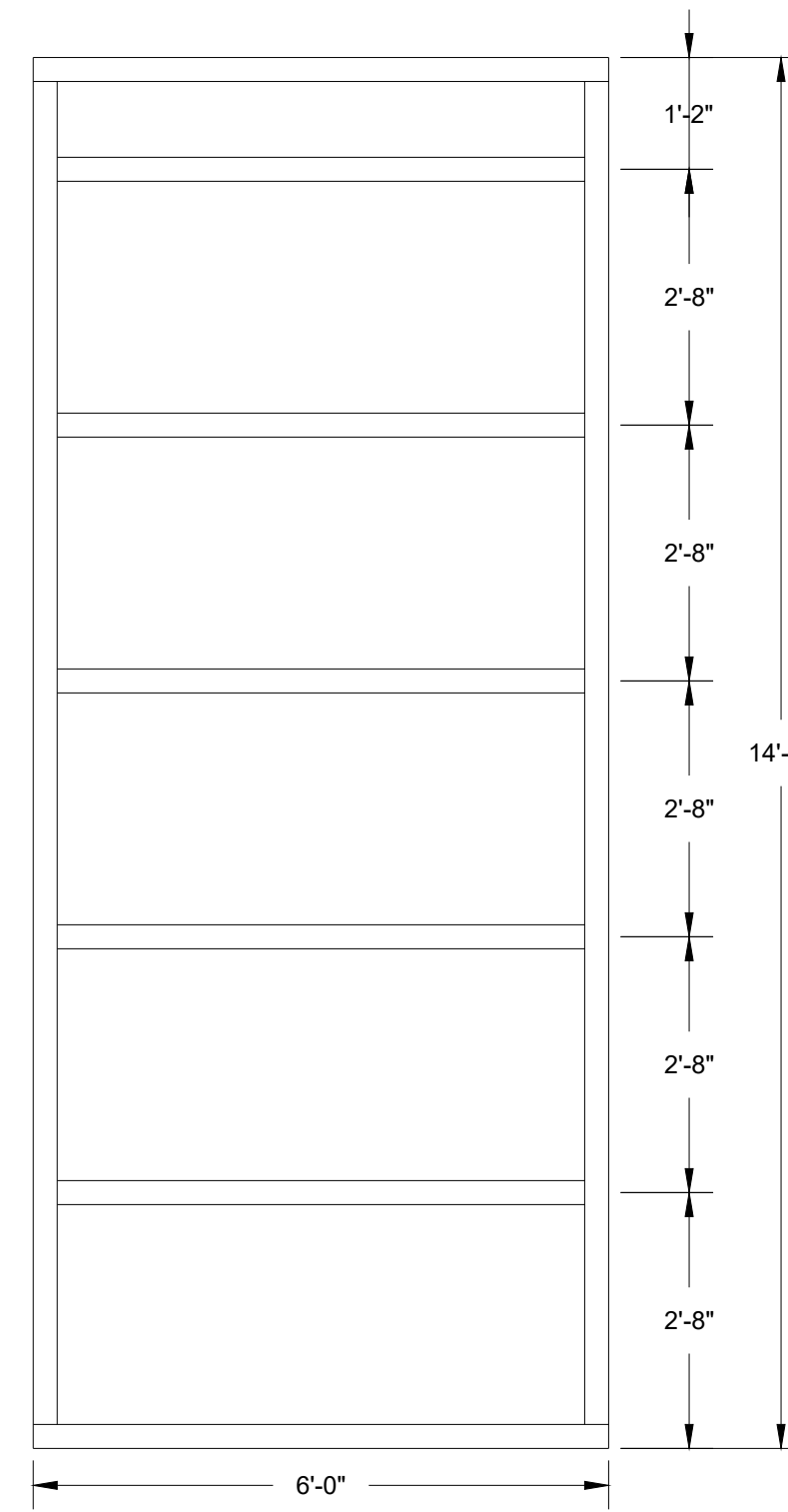
F-4 4 SL US LEG MOLDING DETAIL SEE NOTES



F-4 5 SHOW PORTAL LEG HOLLYWOOD STYLE

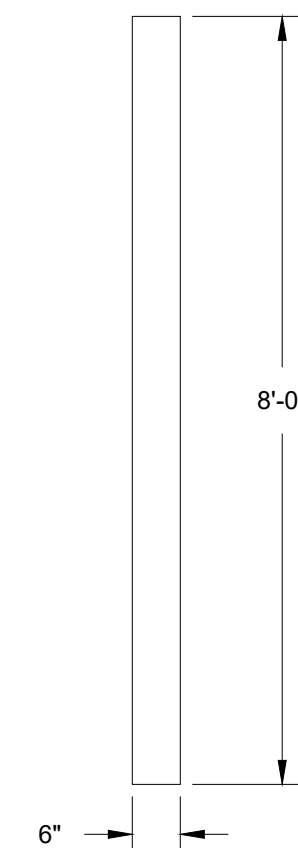


F-4 6 MID PORTAL LEG STAGE FLAT MUSLIN CVR

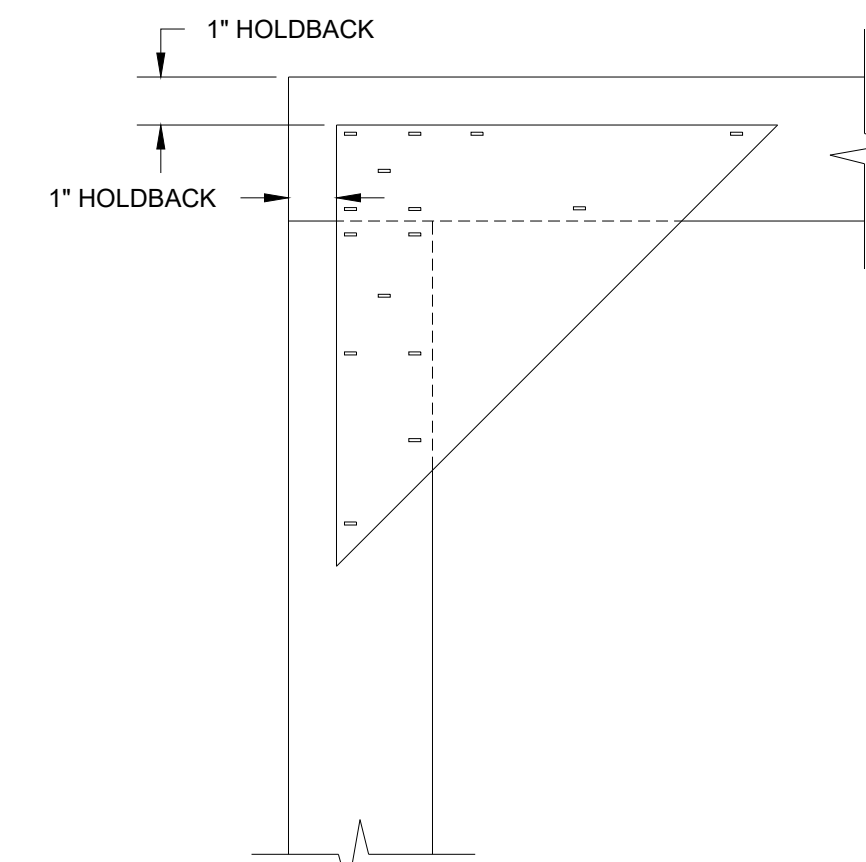


F-4 7 MID PORTAL LEG STAGE FLAT MUSLIN CVR

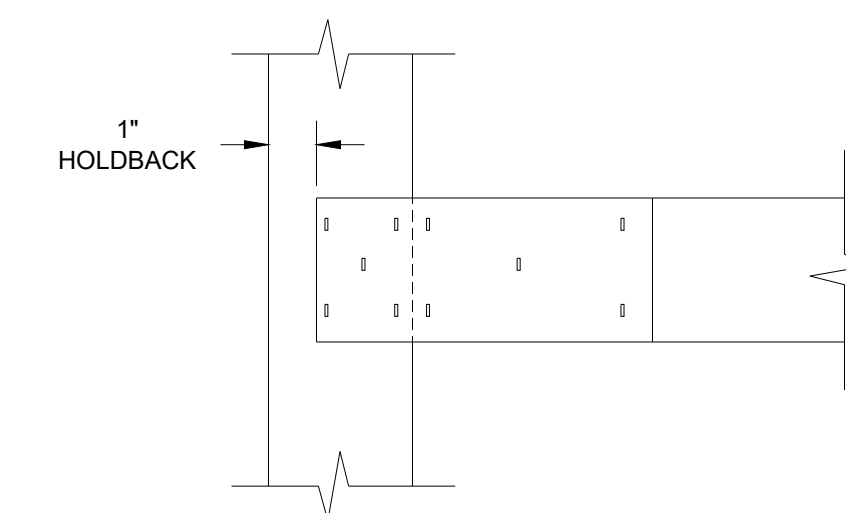
- NOTES:
- USE 1x3 TRUE FRAMING FOR ALL MEMBERS
 - USE 1/2" PLY CORNER BLOCKS AND KEYSTONES
 - MUSLIN COVERED. USE 84" MUSLIN FOR 6'-0" WIDE FLATS AND 48" MUSLIN FOR 3'-3" FLATS
 - REVEAL SHOULD BE BLOCKED AT ALL JOINTS ONCE ATTACHED TO KEEP JOINTS SEAMLESS
 - RIGGING HARDWARE ADDED PRIOR TO COVERING WITH MUSLIN
 - BACK PAINT MUSLIN TO STOP LIGHT BLEED
 - CORRUGATED FASTENER ALL STAGE FLAT JOINTS



F-4 8 LAUAN RETURN FOR US PORTAL CUT 2 TRIM AS NECESSARY



F-4 11 CORNERBLOCK ATTACHMENT DETAIL SCALE 3" = 1'-0"



F-4 12 STRAP ATTACHMENT DETAIL SCALE 3" = 1'-0"

These drawings are instruments of service and as such remain the property of the creator. No copies or reproductions are permitted without the consent of the creator. Copyright (C) 2022

FLORIDA ATLANTIC UNIVERSITY

777 GLADES ROAD
BOCA RATON, FL 33431
PHONE: (561) 297-3810, T.D: (561) 715-9898
FAX: (561) 297-0611

MARK DATE REVISIONS/ISSUES

MARK	DATE	REVISIONS/ISSUES
1		
2		
3		
4		
5		
6		
7		

LADY WINDMERES FAN

THEATRE: STUDIO ONE THEATRE @ FAU
DESIGNER: J. SHAVER
DIRECTOR: K. JOHNSTON
ISSUE DATE: 1-1-22
AY SPRING 2022

PLATE NUMBER
F4

SCALE: 1/2" = 1'-0"

These drawings are instruments of service and as such remain the property of the creator. No copies or reproductions are permitted without the consent of the creator. Copyright (C) 2022

FLORIDA ATLANTIC UNIVERSITY
 777 GLADES ROAD
 BOCA RATON, FL 33431
 PHONE: (561)297-3810, TD: (561)715-9898
 FAX: (561)297-0611

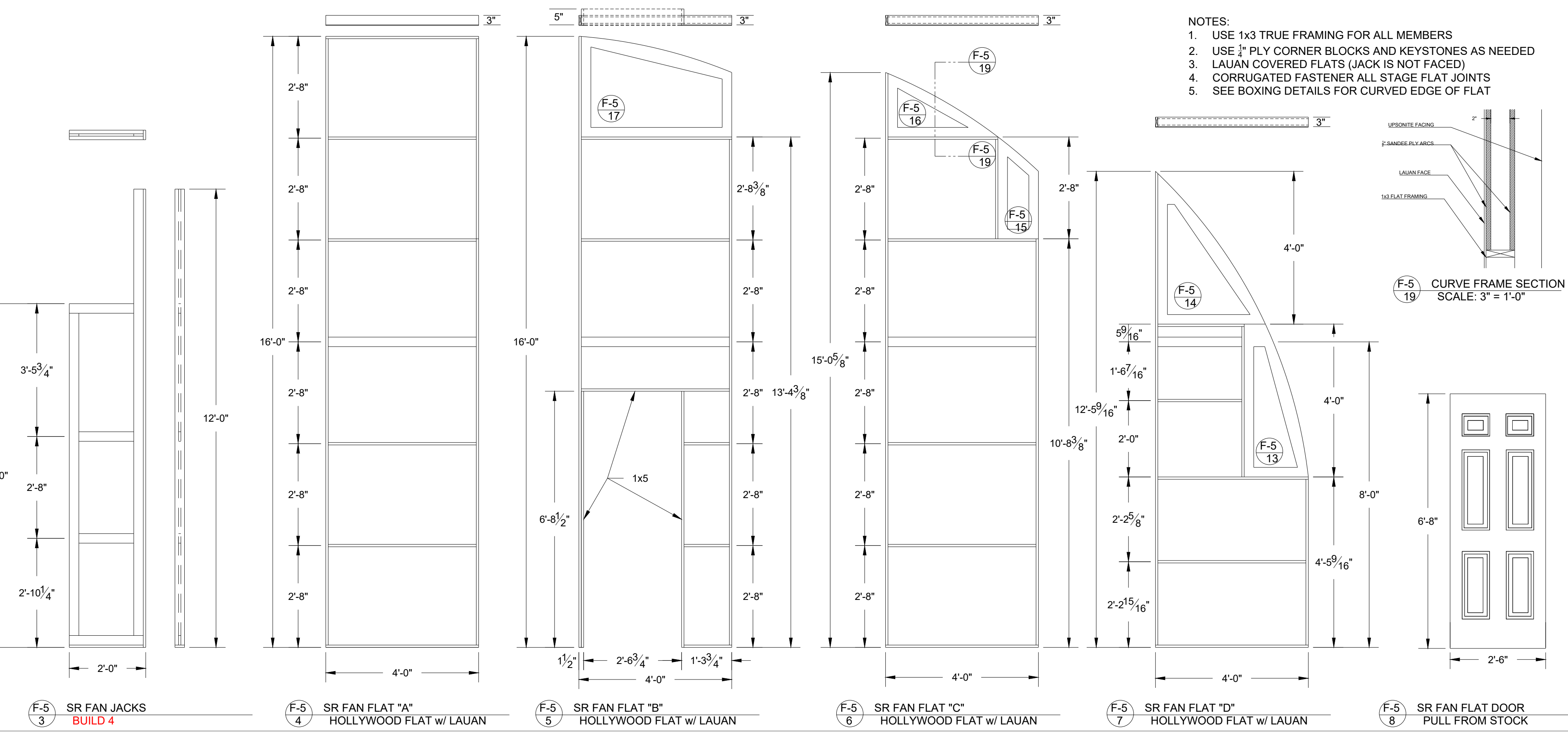
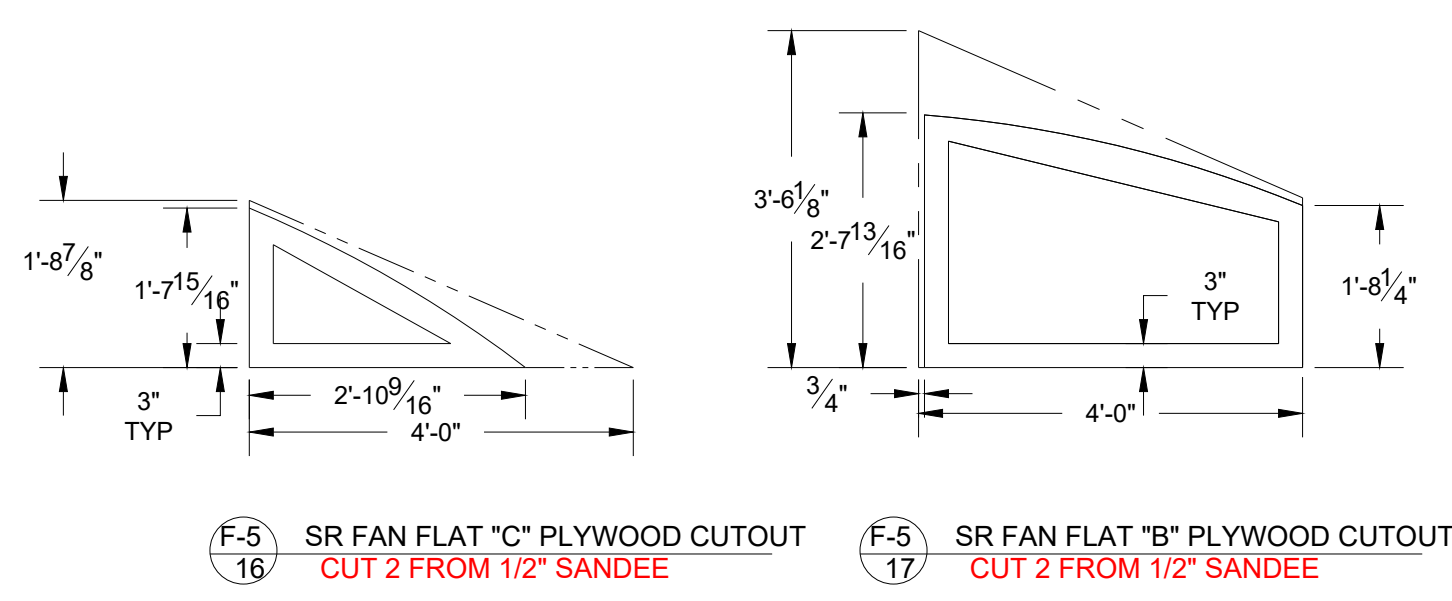
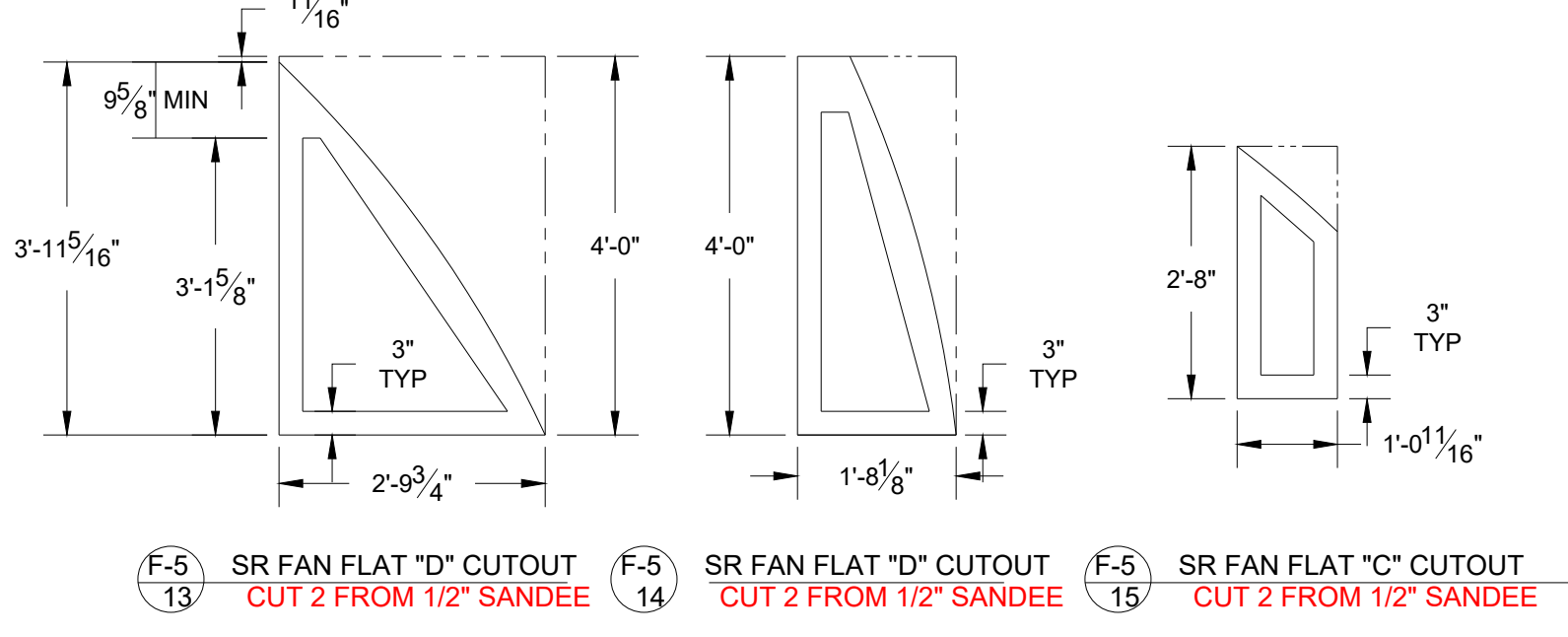
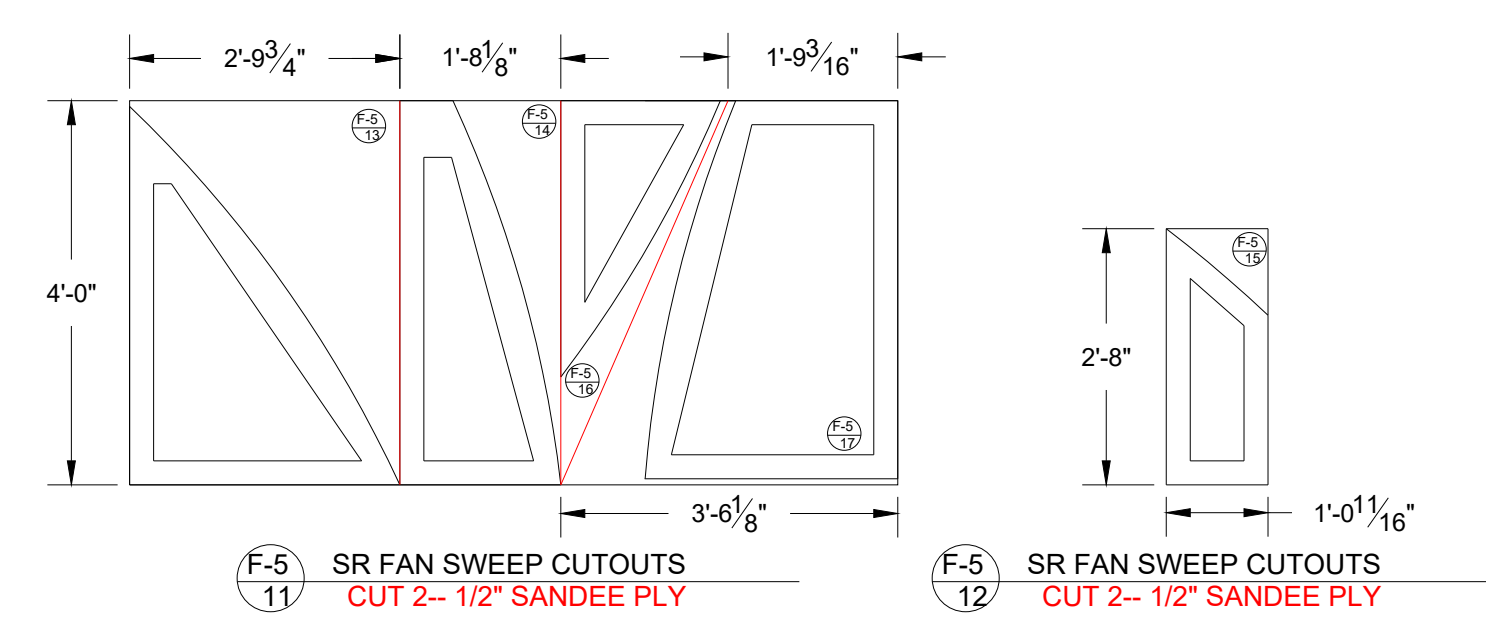
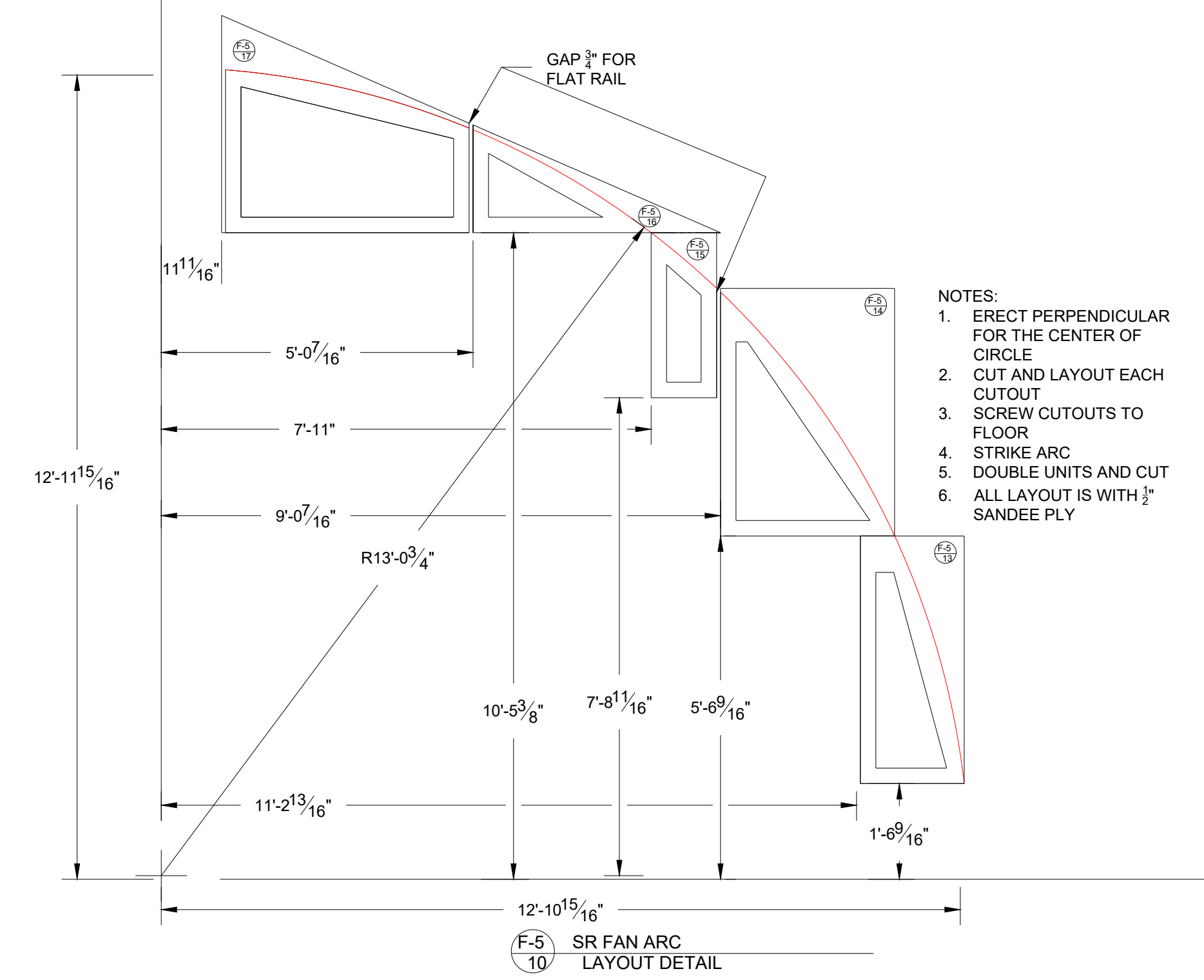
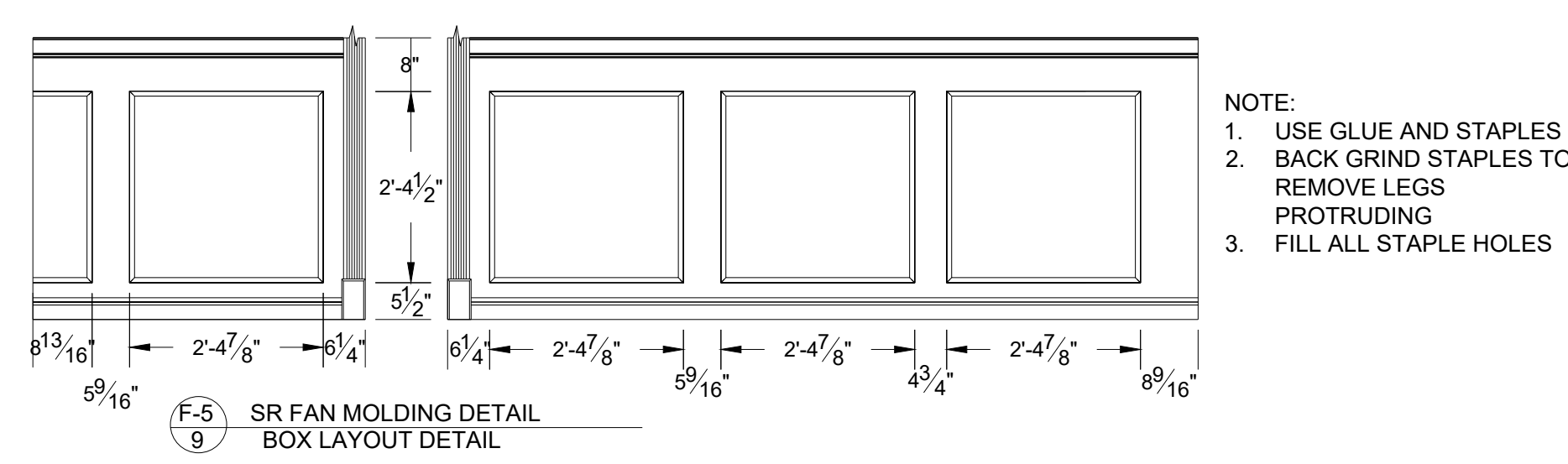
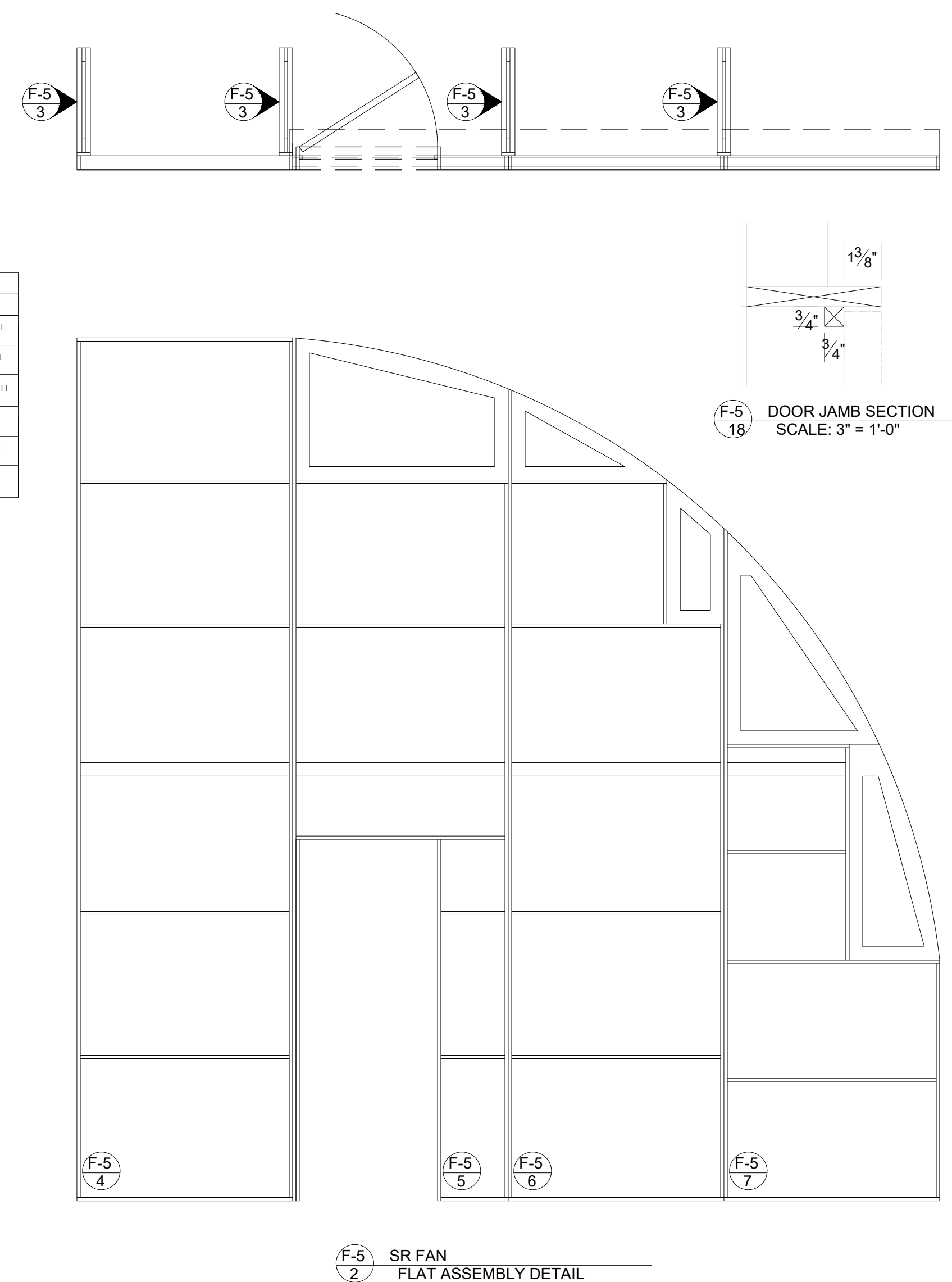
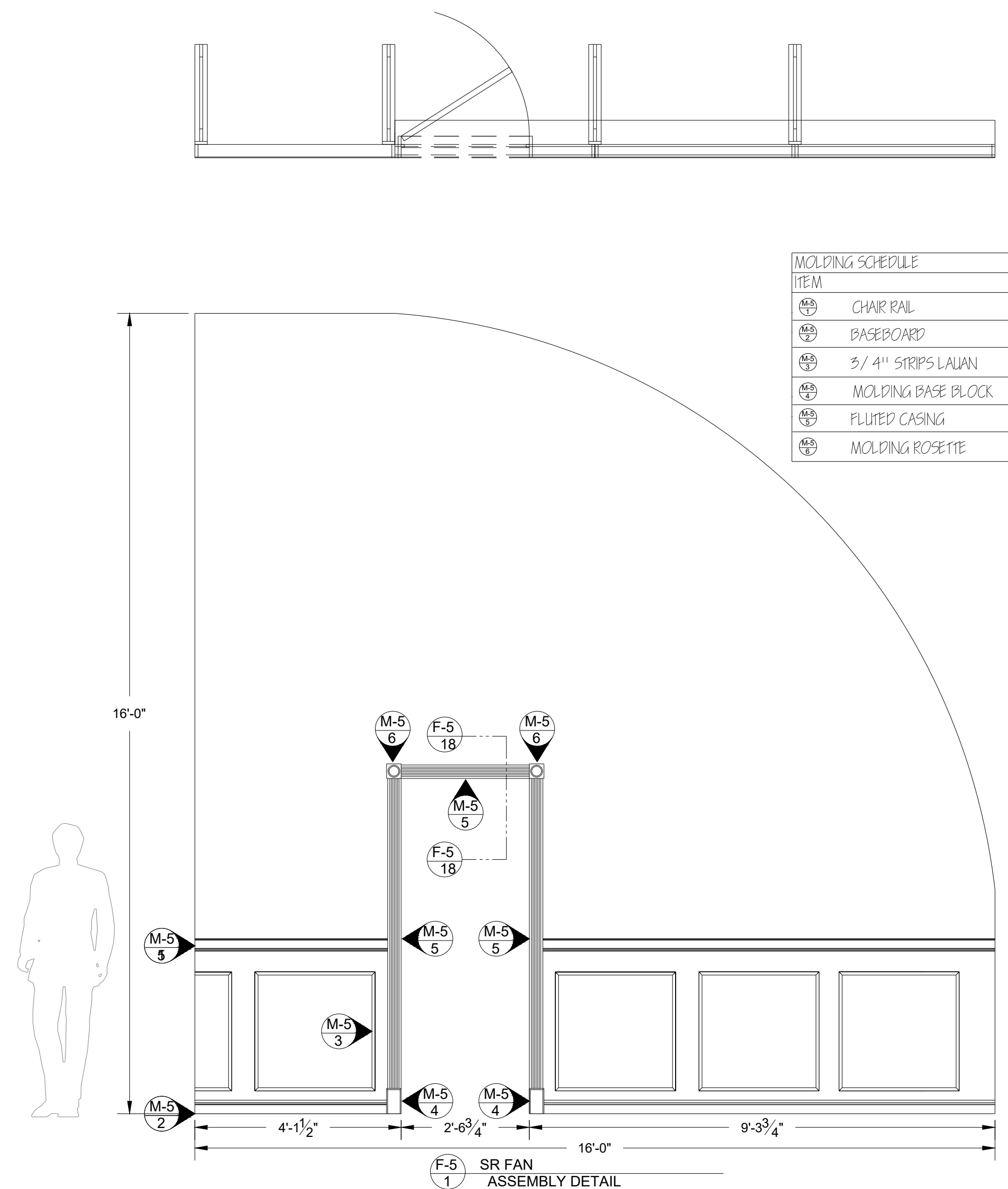
MARK	DATE	REVISIONS/ISSUES
1		
2		
3		
4		
5		
6		
7		

LADY WINDMERES FAN
 THEATRE: STUDIO ONE THEATRE @ FAU
 DESIGNER: J. SHAVER
 DIRECTOR: K. JOHNSTON
 ISSUE DATE: 1-1-22
 AY SPRING 2022

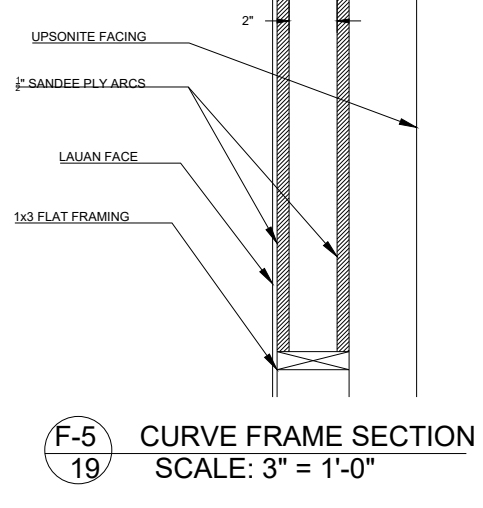
PLATE NUMBER
F5

SCALE: **1/2" = 1'-0"**

MOLDING SCHEDULE	
ITEM	QTY
CHAR RAIL	14'-0"
BASEBOARD	14'-0"
3/4" STRIPS LAUAN	25'-0"
MOLDING BASE BLOCK	2
FLUTED CASING	17'-0"
MOLDING ROSETTE	2



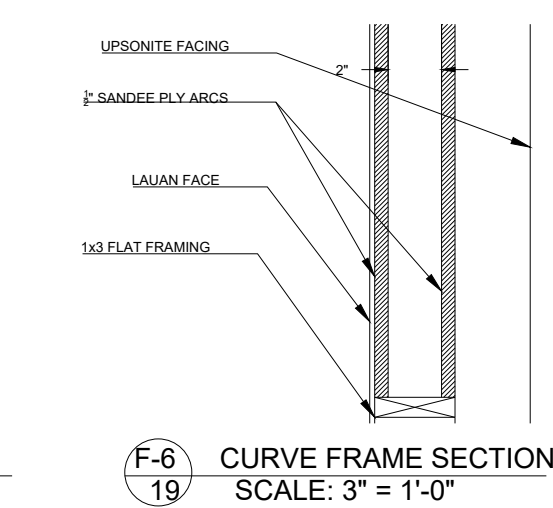
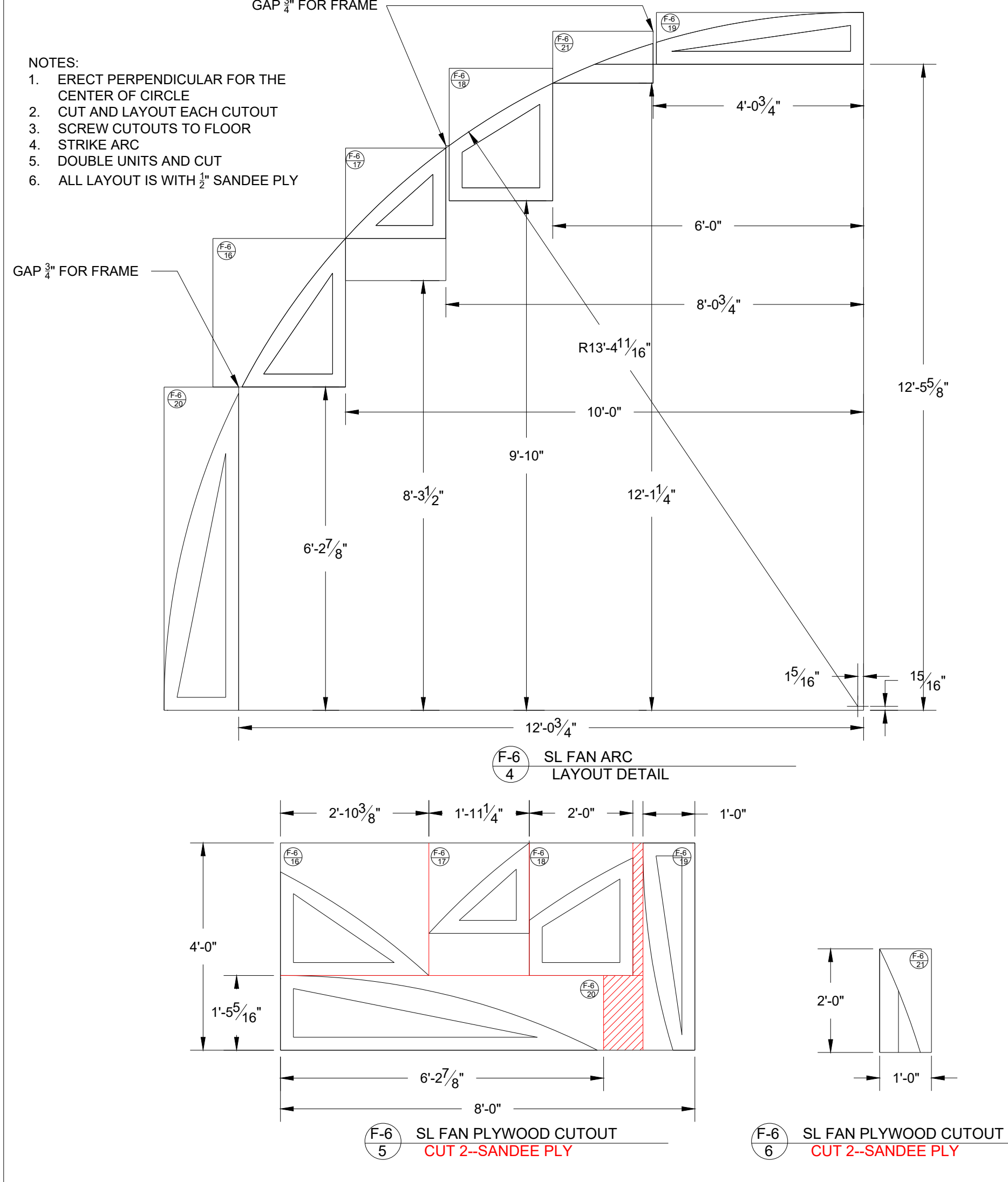
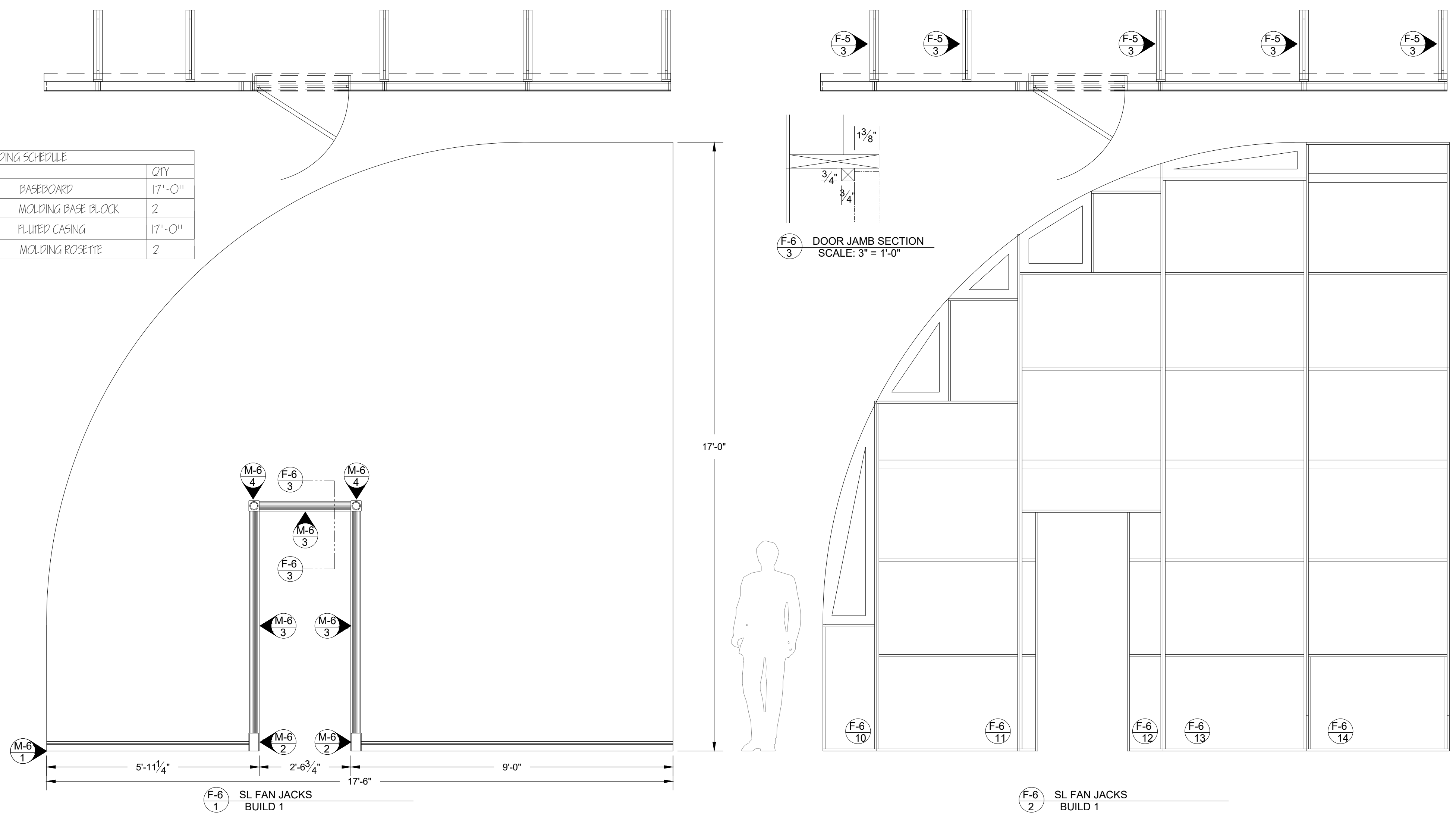
- NOTES:
 1. USE 1x3 TRUE FRAMING FOR ALL MEMBERS
 2. USE 1/2" PLY CORNER BLOCKS AND KEYSTONES AS NEEDED
 3. LAUAN COVERED FLATS (JACK IS NOT FACED)
 4. CORRUGATED FASTENER ALL STAGE FLAT JOINTS
 5. SEE BOXING DETAILS FOR CURVED EDGE OF FLAT



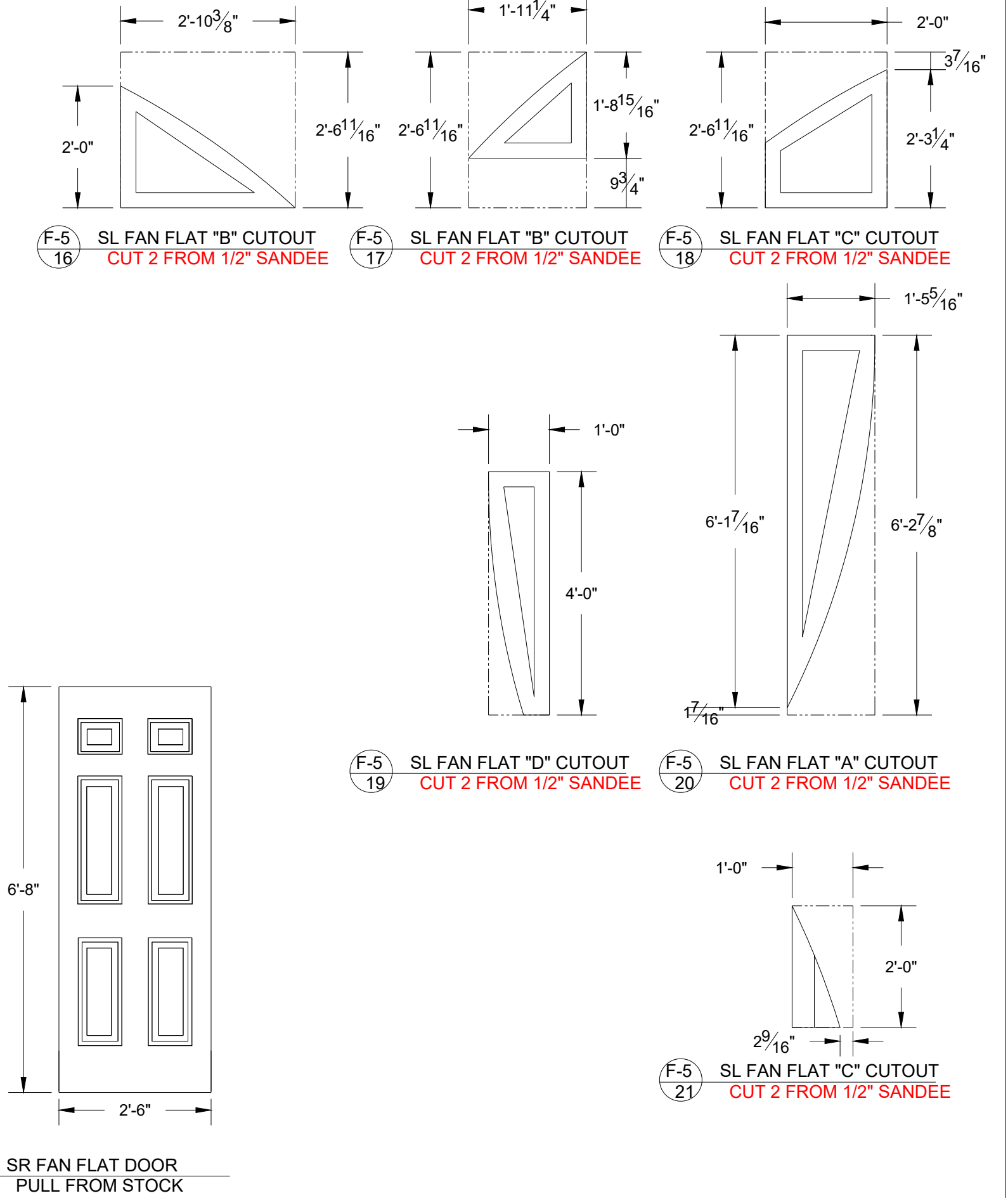
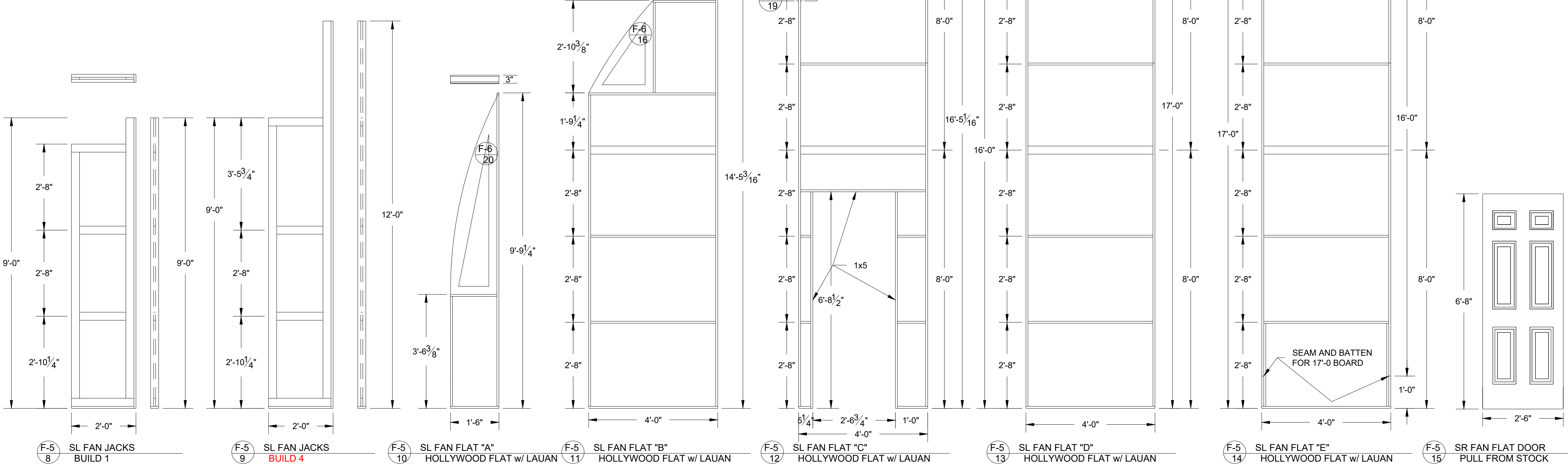
- NOTE:
 1. USE GLUE AND STAPLES
 2. BACK GRIND STAPLES TO REMOVE LEGS PROTRUDING
 3. FILL ALL STAPLE HOLES

- NOTES:
 1. ERECT PERPENDICULAR FOR THE CENTER OF CURVE
 2. CUT AND LAYOUT EACH CUTOUT
 3. SCREW CUTOUTS TO FLOOR
 4. STRIKE ARC
 5. DOUBLE UNITS AND CUT
 6. ALL LAYOUT IS WITH 1/2" SANDEE PLY

MOLDING SCHEDULE	
ITEM	QTY
M-6 4	17'-0"
M-6 3	2
M-6 2	17'-0"
M-6 1	2



- NOTES:
- USE 1x3 TRUE FRAMING FOR ALL MEMBERS
 - USE 1/2" PLY CORNER BLOCKS AND KEYSTONES AS NEEDED
 - LAUAN COVERED FLATS (JACK IS NOT FACED)
 - CORRUGATED FASTENER ALL STAGE FLAT JOINTS
 - SEE BOXING DETAILS FOR CURVED EDGE OF FLAT



These drawings are instruments of service and as such remain the property of the creator. No copies or reproductions are permitted without the consent of the creator. Copyright (C) 2022

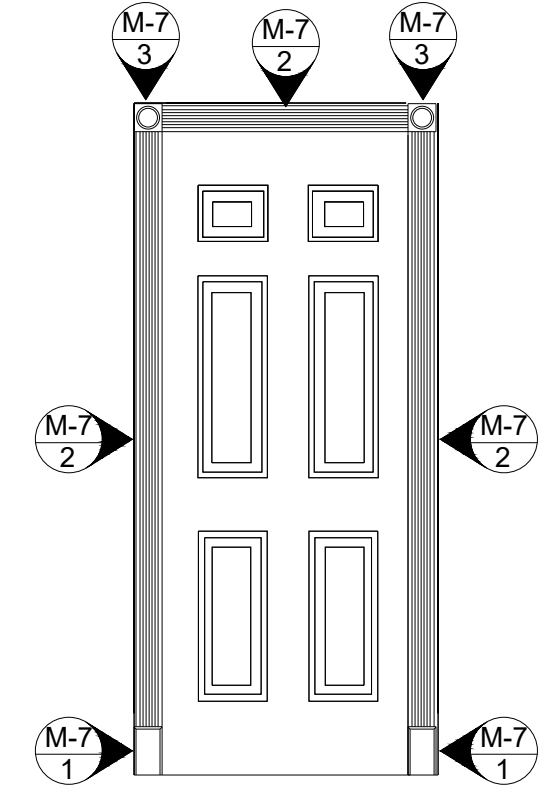
FLORIDA ATLANTIC UNIVERSITY
 777 GLADES ROAD
 BOCA RATON, FL 33431
 PHONE: (561)297-3810, TD: (561)715-9898
 FAX: (561)297-0611

MARK	DATE	REVISIONS/ISSUES
1		
2		
3		
4		
5		
6		
7		

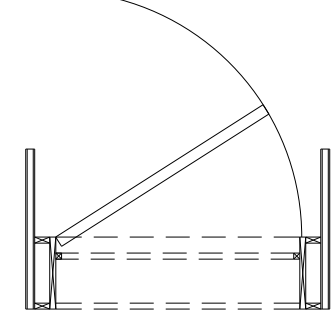
LADY WINDMERES FAN
 THEATRE: STUDIO ONE THEATRE @ FAU
 DESIGNER: J. SHAVER
 DIRECTOR: K. JOHNSTON
 ISSUE DATE: 1-1-22
 AY SPRING 2022

PLATE NUMBER
F6
 SCALE: 1/2" = 1'-0"

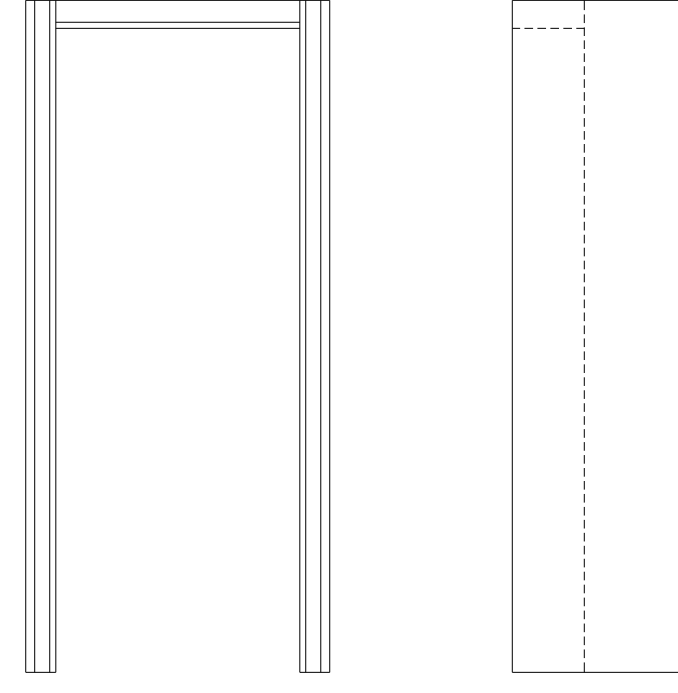
MOLDING SCHEDULE	
ITEM	QTY
M-7 MOLDING BASE BLOCK	2
M-7 FLUTED CASING	17'-0"
M-7 MOLDING ROSETTE	2



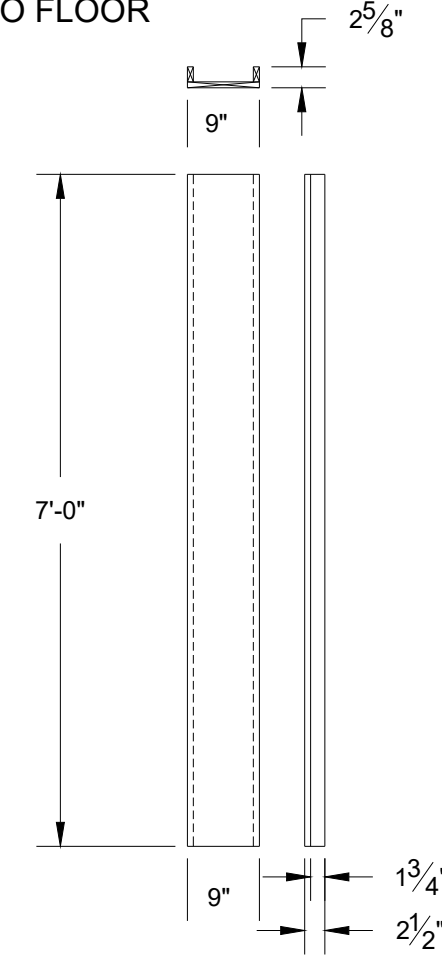
F-7
1 FLOATING DOORWAY
MOLDING DETAIL



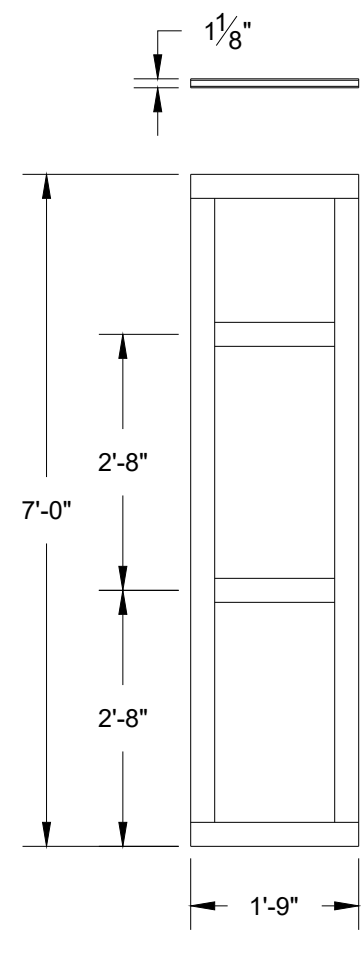
- NOTES:
- JOINTS ARE ALIGNED SO MOLDING COVERS EDGES ON FACE
 - DOOR SETBACK IS FURTHER THAN DESIGN. DISCUSS PRIOR TO INSTALL
 - PERMANENTLY ATTACH TO FLOOR



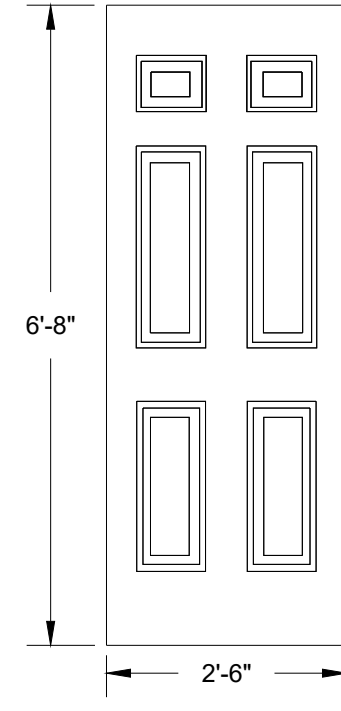
F-7
2 FLOATING DOORWAY
BUILD 1



F-7
3 DOOR JAMB REVEAL
BUILD 2-R&R SANDEE PLY



F-7
4 SUPPORT FLATS
BUILD 2 DOUBLE SIDED



F-7
5 FLOATING WALL DOOR
PULL FROM STOCK

These drawings are instruments of service and as such remain the property of the creator. No copies or reproductions are permitted without the consent of the creator. Copyright (C) 2022

FLORIDA ATLANTIC UNIVERSITY

777 GLADES ROAD
BOCA RATON, FL 33431
PHONE:(561)297-3810,TD:(561)715-9898
FAX:(561)297-0611

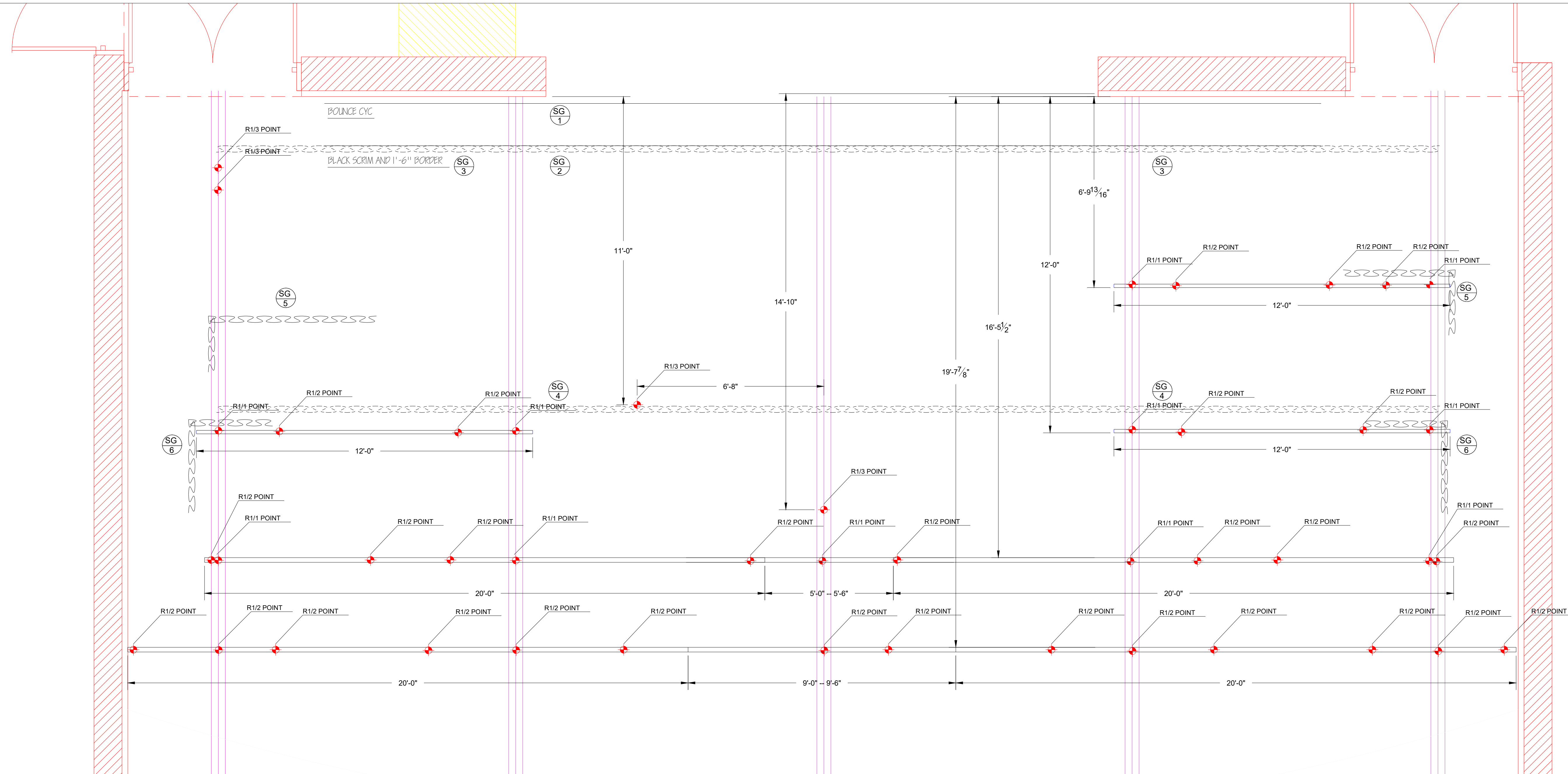
MARK	DATE	REVISIONS/ISSUES
1		
2		
3		
4		
5		
6		
7		

LADY WINDMERES FAN

THEATRE: STUDIO ONE THEATRE @ FAU
DESIGNER: J. SHAVER
DIRECTOR: K. JOHNSTON
ISSUE DATE: 1-1-22
AY SPRING 2022

PLATE NUMBER
F7

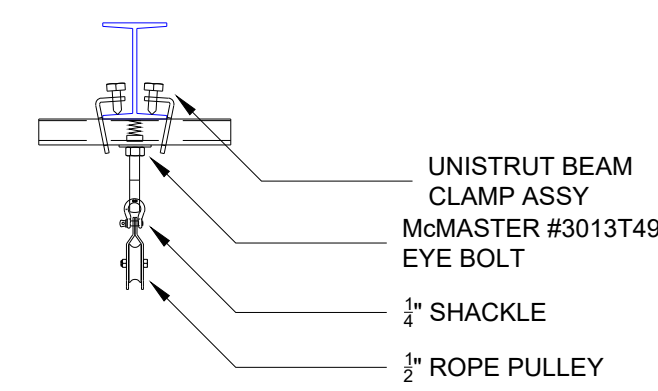
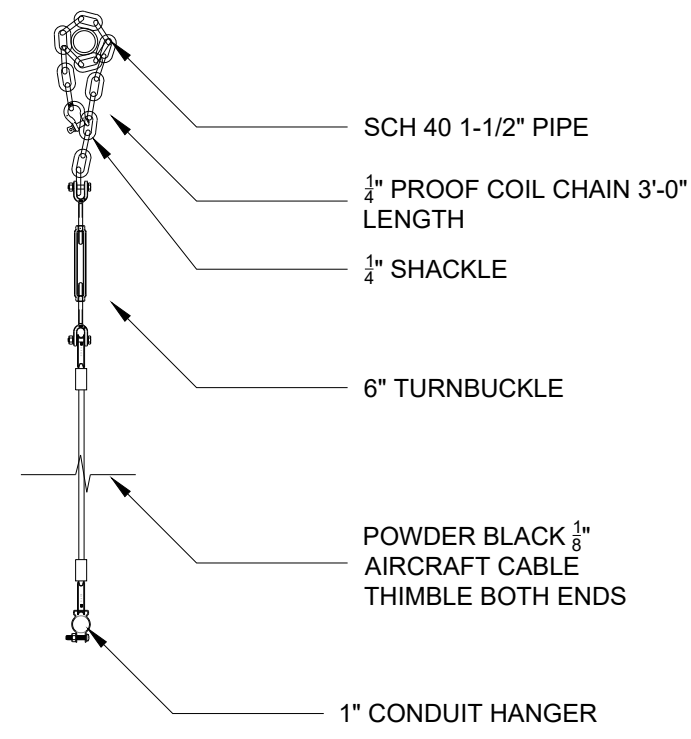
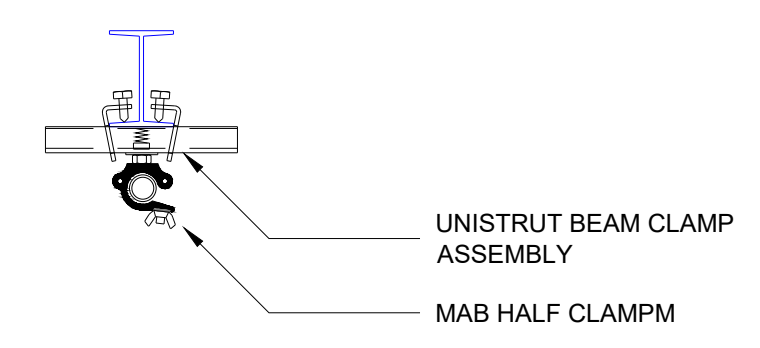
SCALE:
1/2" = 1'-0"



(R-1) PIPE RIGGING POINT "A"
TOTAL: 16 CONNECTIONS

(R-1) CYC HANGING PIPE POINT "B"
TOTAL: 25 CONNECTIONS

(R-1) SPOT PULLEY HANGING DETAIL
TOTAL: 4 CONNECTIONS



SOFT GOOD SCHEDULE

ITEM	QTY
BOUNCE CYC 19'-6" X 36'-6"	1
BLACK SCRIM 20'-0" X 41'-0"	1
2'-0" X 48'-0" BORDER	2
3'-0" X 24'-0" BORDER	2
VELOUR LEG (21'-6" X 12')	2
VELOUR LEG (21'-6" X 6')	2

These drawings are instruments of service and as such remain the property of the creator. No copies or reproductions are permitted without the consent of the creator. Copyright (C) 2022

FLORIDA ATLANTIC UNIVERSITY
777 GLADES ROAD
BOCA RATON, FL 33431
PHONE: (561)297-3810, TD: (561)715-9898
FAX: (561)297-0611

MARK	DATE	REVISIONS/ISSUES
1		
2		
3		
4		
5		
6		
7		

LADY WINDMERES FAN
THEATRE: STUDIO ONE THEATRE @ FAU
DESIGNER: J. SHAVER
DIRECTOR: K. JOHNSTON
ISSUE DATE: 1-1-22
AY SPRING 2022

SCALE: **1/2" = 1'-0"**

PLATE NUMBER
R1